



June , 2011

CHIPS & Chatter

www.svwoodturners.org

THE SILICON VALLEY WOODTURNERS' NEWSLETTER

COMING UP!

CLUB MEETING	6/29
Jeff Swisher (Titebond)	6/29
Hot San Jose Nights	7/7-10
Summer BBQ/Picnic	7/16
Stihl Chain Saw Demo	7/27
Becky—Parting tool	8/31
SVW Shop Tour	9/24
Olive Hyde Art Guild Show	12/2-4

Dave Lambert Demo



At the last meeting Dave Lambert explained the steps, layout, design considerations, tools and techniques he uses to carve and sand his hollow forms.



More on page 6.

May, 2011

President's Letter	2
Next Meeting	2
Check It Out	3
President's Challenge	4
Show & Tell	7
Tips & Tricks	9
Sharon Doughtie	10
Black Light Glue	11
Staff reports	12
David Springett	13
Membership Form	13
Club Notes	14
Ironman	15

Silicon Valley Woodturners Annual Picnic

(Saturday July 16, 2011 – at Rich and Michelle Johnson's)
We are able to have our club annual picnic again this year at Rich and Michelle Johnson's. This is for members and their guests, and children are welcome. The club will provide the meat BBQ, and members are to bring either a side dish or a desert to share.

There are 9 turning categories plus the Picnic President's Challenge for the picnic:

- bowls
- spindle
- natural edges
- lidded turnings
- hollow forms
- segmented turnings



craft items
plates & platters
goblets

Maximum of 3 items/category

All items are entered into Best of Show

Presidents Challenge – Trembleur – winner to receive \$100.00

There will be first, second and third place awards for each of the 10 categories and an overall Best of Show award. A sign up for side dishes is on our Yahoo Group site, under data bases. Please sign up as early as you can so we will know the number of people attending.

PREZ SEZ

I experimented at the end of May meeting with the meeting format and arrangement. From my view it seemed to be better and the flow was smooth, so how was it from your view? Should you have any suggestion or comments send me an email or give me a call. The rooms lighting is still a problem. I am seeking suggestions on ways the club can improve the lighting for our meetings while the church develops a means to improve the lights.

A donation table was set up for the church turning donations. This table will be at every meeting allowing us to make our once a year donation to the church, a membership requirement. Be sure to complete the log, located on a clip board, so you will receive credit for the turning. The deadline for this year's donations is the end of September meeting.

It was somewhat late notice to, let's say, register the President's Challenge and the Show and Tell on line for this meeting and it was great to have those who were able to do so reduce the work of the secretary.

Modification to the President's Challenge "rules", starting with the last Wednesday in June meeting, you must have registered your entry online no later than 4:00 PM to be eligible. If you are unable to register because you do not have computer/internet access you need to arrange with a fellow member to register your turning for you. Make-up entries need to follow rules; the prior month entry can be made up a current month meeting provided there is an entry for both months; all entries must be registered



online; all entries must be presented at a club meeting. I will approve make-ups for extraordinary absents as the result of long term illness or absents due to employment; provided all make-ups are made at the first meeting upon the member's return. Vacation is not accepted as a reason for more than one missed month. Presentation by a fellow member of your turning is desired. "Show and Tell" presentation needs to be registered online by 4:00 PM of the meeting day as well. Failure to register will result in your turning not being published in the newsletter.

To allow the club secretary to enjoy the meeting like everyone else it is important to register your presentations. The end of

June meeting is in need of a secretary as both Howard and Colin will be out of town. I expect over the summer there will be other meetings where both of these men will be unavailable on meeting night. So please help by registering.

The Olive Hide Art Guild has extended an invitation to our members to participate in December 2, 3 & 4 show. The application deadline is August 15, 2011, screening is Sept 10th. For more information, or to apply: visit www.OliveHydeArtGuild.org or send an email to ArtistContact@OliveHydeArtGuild.org.

Keep turning while having fun,
Ard

Next Meeting...

Join us Wednesday, June 29, (last Wednesday of month) at 7 P.M., Fellowship Hall of The First Congregational Church of San Jose, located at Hamilton and Leigh, 1980 Hamilton Avenue, San Jose, CA 95125. Chairs provided.

Bring items for **President's Challenge** and **Show & Tell**. We all learn together.

"June" President's Challenge: Patriotic. You must register your entry online (Yahoo Groups, Database) no later than 4:00 PM the day of the meeting to be eligible. If you are unable to register, arrange with a fellow member to register your turning for you.

Demonstration by Jeff Swisher (Titebond). Our demo this month comes from Jeff Swisher, sales rep for Titebond products. See page 11 for more info on black light glue.

Dinner Before the Meeting—Grant found a new place to meet for dinner before the meeting, that will give us a 15% discount if we just tell them we are with SV Woodturners. It is "Adelita's Taqueria & Restaurant" at 1896 Curtner Ave., on the corner of Leigh and Curtner. *Map on page 12.*

<http://www.adelitastaqueria.com/>

Adelita's is 1.2 miles away. From the church, go south on Leigh Ave. Turn right at the third stop light, and it is on the left. It is about the same distance to the church as our prior dinner location.

They have a full menu including platters, gluten free items, as well as imported and domestic beers. Their prices are reasonable and with the discount it's a great value. Grant ate there last week and reports that it was very good. See you there on June 29th.

CHECK IT OUT

From the SVW Library

“Salt and Pepper Mills”, Alan Holthan, #58

By Phil Roybal



way of mounting the blank. Alan turns a tenon on one end of his blank, mounts the blank in a chuck, and bores out the interior with a 1” saw-tooth Forstner bit, as far as he can reach. Then he takes us through fitting the parts of the mill mechanism into the blank, enlarging the bored hole with a scraper until each section fits properly. Finally he sands and finishes the bottom of the mill. All this is done from the one mounting.



This DVD, by London woodworker Alan Holtham, is part of his project series, and covers his approach to turning a peppermill. Alan is a former retailer who has made a business of instructional wood-working videos and video promotions for tool manufacturers, so he’s very comfortable in front of the camera. This DVD was recorded from a videotape, so it’s not as sharp as DVD masters, but it is very good. It has a couple very short, damaged sections, which most players just skip over.

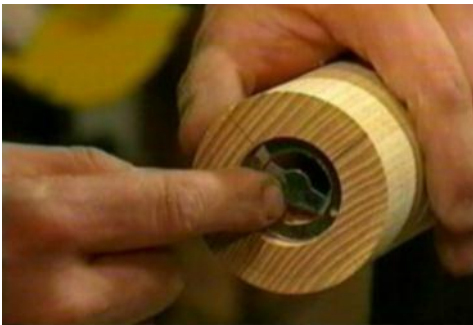
Alan begins by explaining the mill mechanism and how to choose the right piece of wood to turn the mill body. He then roughs his blank to a cylinder, discussing the tool and turning techniques he uses, and his



Next, he parts off the mill body, turns a jam chuck to fit into the previously turned bottom of the body, and reverses the mill body on the lathe to continue boring out the center, then sanding and finishing the

upper end.

Alan removes the mill body and parts off the top of the mill. He next turns a new jam tenon on the remaining stock in the chuck, and mounts the mill body and top on it for final turning, drilling, and finishing. In a few minutes, he’s done.



This is a great tutorial for anybody who wants to turn this classic piece of treen.

Check it out, at the SVW Library!

President's Challenge *Non-Footed*

TURNING OUT



Ard Sealy showed a Bloodwood Round-Bottomed bowl. The challenge of this bowl was to turn the blank which was cracked and not have it come apart. finished with 50/50.



Bob Gerenser showed a Birdhouse Ornament made from Cherry, Walnut & African Mahogany finished with Wipe-on Poly over Shellac.



Dick Pickering showed a Hollow Form made from Tagua Nut.

Dick Pickering showed a Round Bottom Bowl made from Spaulted Box Elder finished with 50/50 & Bealle buffed. This bowl "ROCKS!"



Howard Cohen showed a Colored and Dyed Form made from Mystery Wood finished with Aniline dyes and then at least 10 coats of spray on

Deft Gloss lacquer. Howard Cohen also showed a Bottle Stopper made from Walnut, finished with Friction Polish, with an added insert at top of stopper.



Jim Benson showed a Wall Street II pen (no feet) made from Bloodwood finished with Mylands sanding sealer/and friction polish. The pen was turned with 3 wire

burned lines in center of wood.



Lonnie Hurst showed 2 Non-Footed Letter Openers, made from Kingwood and Acrylic finished with 50/50, polished and buffed. Matching openers to pen sets that were commissioned and delivered.

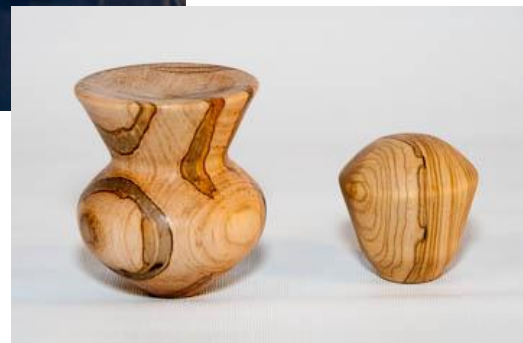




Mike Lanahan showed a Cocobolo Shaving Brush w Beaded Grip made from Cocobolo finished with CA. The handle of this brush has a gripping surface added, using an 8 x 2mm beading tool.



Rich Johnson showed a RJ's Pacificers made from various finished with 50/50. Tops, String Puzzles, Gear Shift Knobs.



Rebecca Frisbee showed a Round bottomed Cedar bowl and a Hollowed palm nut (make up), both finished with Crystal coat



Scott Landon - no details provided.



Johnny Alias showed a Small Salad Bowl made from Jackaranda finished with Sanding sealer and 50/50. Blank was mounted on a screw center, outside profile was turned. Blank was then reversed and mounted on a Vicmark chuck. Inside was hollowed using a homemade hollowing tool. Sanding sealer and 50/50 were then applied.



Johnny also showed a Whiskey Barrel bank made from Jackaranda and Walnut finished with Sanding sealer and 50/50. Blank was mounted between centers outside profile was turned, blank was then mounted on Vicmark chuck, and inside was hollowed. Grooves were routed into outside of cylinder, 1/8 Walnut strips were glued into grooves and sanded. Circles were turned to fit into ends of cylinder, seal of the United States was applied and glued in. Finish of sanding sealer and 50/50 were then applied.



Colin Mackenzie showed a made from Manzanita wood bowl with no foot, titled Earthquake, finished with 50:50.



Phil Roybal showed a Shaving Brush made from Stabilized cocobolo finished with None. This is a shaving brush turned from stabilized cocobolo with a mother-of-pearl dot inlay. Because the wood has been stabilized with plastic resin, a further coat of plastic finish is unnecessary. Instead, he sanded the piece to #12,000 with 3M MicroMesh, then rubbed it out with 3M Perfect-It Swirl Remover to leave a high-gloss finish. The brush tuft is from The Golden Nib.



Jim Gott showed a "No Foot" Natural Edge (Round Bottom) bowl made from Iron Bark Eucalyptus finished with 50/50.



Marcus Moody showed a Poi Bowl made from Mystery wood, finished with 50/50.

More from Dave Lambert's demo:



SHOW & TELL



Dean Adkins showed a tall salad bowl turned from elm and finished with Mahoney's walnut oil utility finish. Dean noted that the elm was green turned and dried, but was very stable as it did not oval any. He called it "barnyard" elm as it had a very distinct smell!



Rebecca Frisbee showed a Bottle stopper from Found wood with a Crystal coat finish.



Lonnie Hurst showed a University of Michigan Prism Lighted Paper Weight made from Walnut, Maple, Lucite Prism, Custom LED Lighting finished with sanding sealer, CA/Watco, Shellac, Buffing. Commissioned gift to a principle leaving a school and the idea was to take a UofM memorabilia and turn it into something that he would enjoy having on his desk, or in his living room as a memento from the teachers/staff at this school.



Lonnie Hurst also showed a Wine Stopper Display Rack made from Lucite, Snakewood, Maple, Ebony, mystery wood, door knobs, finished with sanding sealer, CA/Watco, Shellac, Buffing. Used Craft Supplies wine stopper plastic stand and turned it into something that would look nice in a home bar or in a merchandizing set up



Doug Ryan showed three walnut candle sticks with a twist... or not, made from walnut, finished with tung oil. Inspired by a Jimmy Clewes demo a few months ago. Each stick is turned on four centers, one stick with a RH twist, one LH & one straight. Each stick has a triangular cross section. The tung oil finish unfortunately obscured the once attractive grain pattern.

Doug also showed a wedding goblet with two captive rings, made from cork oak, finished with tung oil. It was turned green a couple days earlier and he noticed that the bark has begun to separate. A tool to cut the rings is fashioned from concrete nails.





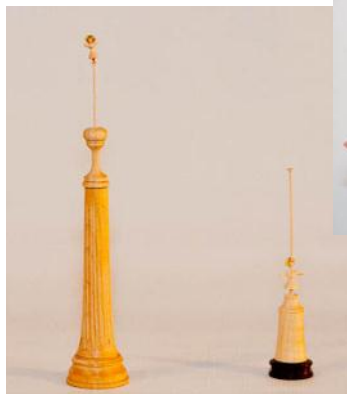
Don Bianucci showed a '12" Bowl made from Ash, Black Walnut, Birch finished with 50 50.



Scott Landon - no details provided.



Colin Mackenzie showed a double tear-drop box made by Jason Breach from unknown wood finished with No sanding or finish. An example of the work of Jason Breach from the Utah Symposium 2011.



Charlie Belden showed a How Many Angels & Visa Versa made from maple finished with none. The answer to "How many angels can fit on the head of a pin - and the reciprocal question.



Charlie Belden showed a Neon Next? made from probably beech finished with none. Flexible Neon Light Example.

On The Perils of Personal Protective Equipment

This morning after breakfast I bandsawed out a Walnut blank from a limb I had fetched in May of last year, if my markings are to be believed. The half log yielded a blank about seven inches in diameter, just right for a small natural edge bowl. After fixing it between centers I began roughing out the blank to prepare a tennon. I noticed how dry the wood was and that I was producing quite a bit of dust along with shavings.

Well, this isn't good, I thought. I certainly don't want to be breathing all that dust while I'm turning, so I'd better don my air-helmet. I've had my air-helmet for about a year and I've sported it on a couple of occasions, but not as often as I probably should have.

This air-helmet, a piece of Personal Protective Equipment, I might add, has a belt-worn battery and also attached to the belt is the filter and fan assembly. The fan directs filtered air through a hose to the helmet and, in turn, to me. The filter/fan look for all the world like a fanny pack, keep that in mind.

As I said, I started this task after breakfast, which consisted of yogurt swimming with live bacteria and high fiber cereal. While certainly wholesome and, no doubt, nutritious, after a couple of hours churning away in my gut this concoction has a tendency to produce copious amounts of naturally occurring gas.

The air-helmet I was wearing most likely does an admirable job of filtering dust, but it's not a gas-mask. Remember the part about fanny pack? Need I say more?

Y'all keep turning!

Anonymous

Got a slick Tip or Trick you'd like to share?

Have a problem for which you need advice?

Submit or request a Tip or Trick to this section to MikeLan@aol.com

FOR SALE

Nova Bowl Jaws—One Nova & Supernova chuck accessory bowl jaw set 35mm and one Nova & Supernova chuck accessory bowl jaw set 25mm. I am asking \$20 dollars for each one. They cost \$60 new. Oscar Wittrock, (408)377-0570, swittr12342@aol.com

Stihl 14" Chain Saw—011-AVT-14" Excellent condition, Starts easily.
Glenn Krueg, (510) 797-9046, gkrueg@sbcglobal.net.

Place an add for those pesky tools you don't use anymore, just laying around the shop taking up space. E-mail MikeLan@aol.com



Even Roy wants to know...
How did you do that?

Rich Johnson's
Woodturners' Boot Camp
Learn the basics, from chainsaw to polish. An all day class. Book available. Sign up now.
(408) 254-8485.

Have you changed?

Have you changed email addresses? Have you moved? Have you changed phone numbers? We are trying to update our roster and found many things have changed over the year. If you have changed, let Howard know so that he can update the roster.

Featured Turner

Sharon Doughtie

An upcoming visiting turner from Hawaii, Sharon Doughtie, is coming to the main land August 6th through September 13th, and is booked for **Saturday August 13th** at the Bay Area Woodturners (BAWA) meeting. Sharon demonstrates her technique of turning embellished boxes and bowls. **Visit her website,** <http://www.sharondoughtie.com/> to see her work.

Bio

I have always had an affinity for wood. I made my first box when I was eight; someone cut the pieces for me and I nailed them together, put hinges on it and carved a garland of leaves around the perimeter of the top. I was a cabinet making apprentice for a while when I was 18. I worked on many kinds of things from dining table sets to plant stands to kitchen cabinets. It was fun but not a passion. I started turning in 1993 and quickly realized this is the woodworking that I most prefer. I became a full-time turner in 1998. I have had the good fortune to observe and learn from many fine wood artists.

Artist Statement

My current work incorporates designs based on freeform Celtic knots and explores how the curving, undulating patterns can cross cultures, look like something from nature or illustrate an emotion.

I wanted to explore something from my own Scottish Irish culture and to take knot work in a new direction; so rather than drawing, then burning, the knot around the rim of a platter, I allow my designs to drift across the pieces and flow over the edges. I use simple bowl shapes, which have been dyed and textured, as back drops on which to weave the designs.

The Bay Area Woodturners (BAWA) has invited SVW members to attend their Saturday demonstration. The cost for visitors is \$25 for the day. There is no need to sign up, as there is plenty of room. Just show up at the Castro Valley High School (Cafeteria), at 9:30 AM.



Next Meeting Demo

Demonstration by Jeff Swisher. Our demo this month comes from Jeff Swisher, sales rep for Titebond products. Jeff will show us, among other products, a glue with fluorescent properties, and a molding glue.

Making The Invisible...Visible



Even with careful wood glue application and handling of your project, glue residue and fingerprints may be present on your wood surface. While they may be invisible to the eye, they will be quite visible once you apply a stain or finish.

To ensure that your wood surface is ideal for staining, use Titebond® Fluorescent Wood Glue, the highest performing interior wood glue that contains a fluorescent additive. Once you have completed your project, simply shine a "black light" over the wood surface to easily detect any glue marks or smudges. Sand the affected areas and you are ready for stain.

- Same superior performance as Titebond Original
- Detects unwanted glue residue when viewed under a black light
- Residual glue can be sanded off prior to applying stains
- Strong initial tack – Superior strength
- Fast set & short clamp time
- Clean up with water – Non-toxic
- Excellent sandability
- Unaffected by finishes



1-800-347-GLUE (4583) • www.titebond.com

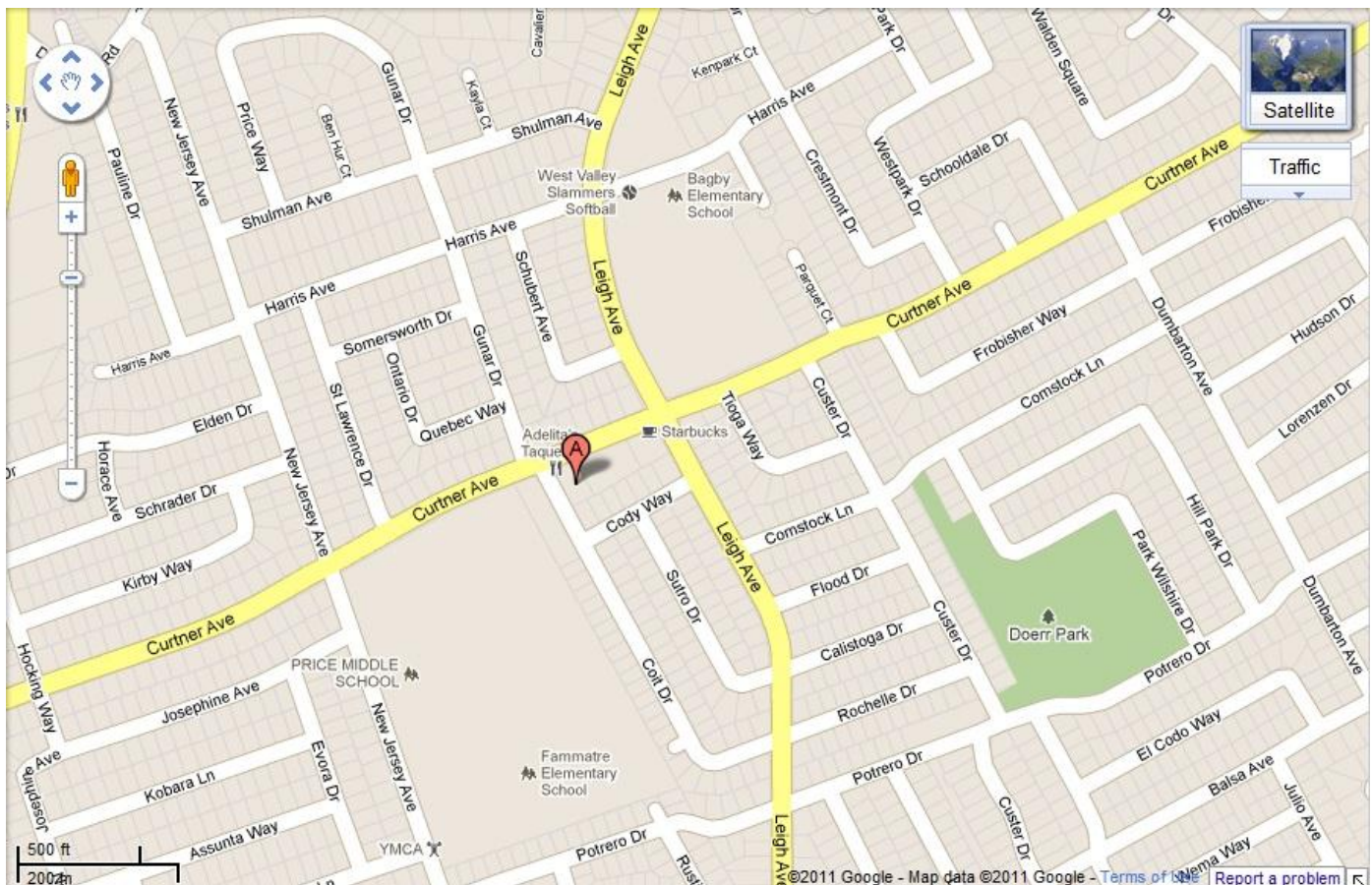
Staff Reports

- President (Ard) - There was not old business or new business discussed
- VP/Program Director (Grant) - The June 29th, Demo by Jeff Swisher from Titebond.
The club picnic is at Rich and Michelle Johnson's July 16, good eats, turning competition and silent auction.
- Secretary (Howard) –
- Library (Phil) – the Library is open for business at each meeting, with video rentals running \$2/month. We have no new videos at the moment.
- Treasurer (Craig) –Gave balances.
- Ways and Means (John) –
- Newsletter (Mike) - Nothing new to report for the newsletter.
- Sunshine (Becky)-
- Webmaster (Charlie) –
- Property Management & Apparel (Bob & Gary.) - The Club tools are ready for the next Home & Garden Show. NO apparel sales to report.
- Home & garden (Rich) –
- Site Prep (Johnny & Milton) -
- Membership (Bob Gerenser) -

Other

Old business

New business— New Dinner location before meeting Adelita's Taqueria:



New member –

David Springett



More photos on the Yahoo Groups site or follow this link (or paste into your browser):

<https://picasaweb.google.com/lanahan.mike/SpringettDemo?authkey=Gv1sRgCJqGtpXx-oeMaA&feat=directlink>

Join Silicon Valley Woodturners

Want to join a great group of turning enthusiasts in an atmosphere of sharing and camaraderie? Become a member of Silicon Valley Woodturners.

We meet on the last Wednesday of each month. See page 2 for details. Drop in at any meeting and check things out. To join, contact Ard Sealy (see contact list), or just complete the application form below and mail with check to Craig.

Learn more about our club on the web at www.svwoodturners.org.

Silicon Valley Woodturners *Membership Application*

Name _____ Date _____

Address _____

City _____ State _____ Zip _____

Home # _____ E-Mail _____

Type of Lathe _____ Are you a member of AAW Yes ☐ No ☐

☐ Individual Membership \$25.00

☐ Family Membership \$35.00

You can fill in the membership form before you come to the monthly meeting, or mail it and a check made out to SVW to:
Craig Thorson
2325 Kehoe Ave
San Mateo, CA 94403

CLUB NOTES

2011 Silicon Valley Woodturners Staff, Volunteers, Contacts

SVW needs YOU

It takes more than the officers and program chairs to make our club function at its best. If your name's not in the column at right, we still need your help in smaller ways to manage some of the club's activities.

This is a HELP WANTED ad, and we need you to respond. There are always things that need doing here. In particular, we need:

- Volunteers for shop tours
- Volunteers to present at meetings
- Members to write up their profiles for the newsletter
- Short articles for *Chips & Chatter*

Please volunteer to Ard Sealy and help make our activities happen.

President	Ard Sealy	(916) 871-4626	asealy@pacbell.net
V.P./Program Chair	Grant Beech	(408) 314-1040	grantbeech@sbcglobal.net
Treasurer	Craig Thorson	(650) 678-1970	chomes@wwdb.org
Secretary (substitute)	Howard Cohen Colin Mackenzie	(408) 378-9456 (831) 425-1514	howard687@yahoo.com colin@jknvl.com
Newsletter Editor	Mike Lanahan	(408) 926-9330	Mikelan@aol.com
Sunshine Chair	Becky Frisbee	(408) 978-6219	
Photographer	Jim Gott	(408) 265-9501	jgtimp@aol.com
Property Management	Bob Gerenser Gary Keogh	(408) 262-5411 408 281-9054	bob.gerenser@sbcglobal.net gkeogh@sbcglobal.net
Home & Garden Show	Rich Johnson	(408) 254-8485	Rich@latheart.com
Apparel	Bob Gerenser Gary Keogh	(408) 262-5411 408 281-9054	bob.gerenser@sbcglobal.net gkeogh@sbcglobal.net
Ways & Means	John Whittier	(408) 379-3722	jwhit10506@aol.com
Librarian	Phil Roybal	(408) 255-4789	phil@philroybal.com
Webmaster	Charlie Beldon	(408) 559-1582	charlieb@accesscom.com
Site Prep Committee	Johnny Alias Milton West	(408) 227-2423 (408) 729-6334	vet59@ix.netcom.com miltwest@sbcglobal.net
Membership	Bob Gerenser	(408) 262-5411	bob.gerenser@sbcglobal.net

Sharing Knowledge

MEMBERS: Please contribute your expertise to our newsletter. The editor will help you get your article ready if need be. Deadline is one week after our club meeting.

OTHER WOODTURNING CLUBS: you may use materials in this newsletter for the benefit of other turners. Please credit Silicon Valley Woodturners and the newsletter month and year for any material you use, and mention our web site: www.svwoodturners.org. Note that if we've flagged an article as having been reprinted from another source with permission, you must secure that same permission in order to use that material.

Volunteer Instructors

The turners below have graciously offered to open their shops to help members who want to learn to sharpen, try something new, or master a technique that just doesn't seem to be working. We all love to share. You just have to ask.

Willing to help? Contact Mike Lanahan to join this list.

Jim Gott (408) 265-9501

Rich Johnson (408) 254-8485

Phil Roybal (408) 255-4789

Jim Benson (831) 475-5615

Ironmen are those who successfully complete all 12 President's Challenge projects for the year. Those who meet the challenge are awarded coveted and distinctive IRONMAN name badges. A blue bar in the accompanying chart means that person has completed the project for the month indicated. You needn't be a great turner, you just need to participate. Make something in our Challenge theme and bring it to the

Editor's Note

If I've somehow overlooked your President's Challenge entry, send me an e-mail at MikeLan@aol.com

President's Challenge 2011	January <i>Laminated</i>	February <i>Stemmed</i>	March <i>Made from 4"x4"</i> <i>April (March 30)</i> <i>Egg</i>	May <i>(April 27)</i> <i>Hollow Form</i>	June <i>(May 25)</i> <i>Not footed (no stands)</i>	July <i>(June 29)</i> <i>Patriotic</i>	August <i>(July 27)</i> <i>With Handle</i>	September <i>(Aug 31)</i> <i>Color it</i>	October <i>(Sept 28)</i> <i>Winged</i>	November <i>(Oct 26)</i> <i>Lidded</i>	December <i>Serving</i>	Picnic (July 16) <i>Trembleur</i>
Adkins, Dean												
Alias, Johnny												
Benson, Jim												
Bianucci, Don												
Cohen, Howard												
Frisbee, Becky												
Geren, Ron												
Gerenser, Bob												
Gott, Jim												
Green, Herb												
Hurst, Lonnie												
Johnson, Rich												
Keogh, Gary												
Lanahan, Mike												
Landon, Scott												
Levin, Harry												
Mackenzie, Colin												
Moody, Marcus												
Pickering, Dick												
Robinson, Norm												
Roybal, Phil												
Schmida, Tom												
Sealy, Ard												
Thorson, Craig												
Thorson, Jeff												
Westfall, Dick												
Whittier, John												
Wiley, Michael												

IRONMAN Rules

- Entries must not have been shown before.
- If you miss a month's Challenge, you may bring it to the following meeting.
- If you bring a make-up Challenge to a meeting, you must also show the current month's Challenge piece.
- Entries must be submitted online (Yahoo Groups, Database) no later than 4:00 PM the day of the meeting to be eligible. If you are unable to register, have a fellow member register for you.
- The president may approve make-ups for extraordinary absents for hardships such as long term illness, or absence due to unemployment; provided all make-ups are made at the first meeting upon the member's return. Vacation is not accepted as a reason for more than one missed month.