



# CHIPS & Chatter



THE SILICON VALLEY WOODTURNERS' NEWSLETTER

## Jim's Way: Natural Edge

**October 3rd**

**Program**

**Dennis Lillis and  
The Mighty Calabash**

In This Issue	Page
Jim Gott's Natural Way	1,4
The President's Turn	2
Calendar	4
Minutes	5
Sam Angelo Demo	6,7
Turn-n-Learn Pics	7
President's Challenge	8,9
Show & Tell	10,11
Lesson-Bob Bley	12
Bandsaw Maint.-Mike	13
Club Notes	14
Iron Man Stats	15
Sponsors	17
For sale	18

Silicon Valley Woodturners member Jim Gott gave a demonstration at the September meeting on how to turn a natural edge bowl. Before he even mounted the Pecan blank Jim explained the use of a two prong drive center and a point and cup tailstock center. Using this combination of center supports he can align and balance the blank so that the high "wings" are the same



height and the valleys are symmetrical.

Having mounted the blank Jim showed a posture he had learned from Mike Mahoney when roughing out the blank's outside. By turning "left handed" and guiding the bowl gouge with his right hand he

stays out of the path of the chips he's creating.

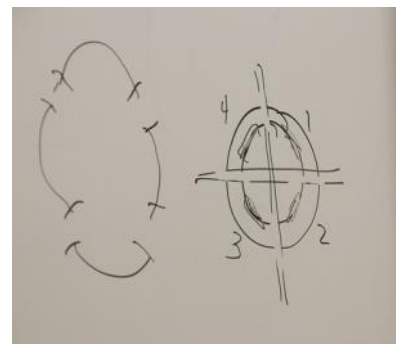
In short order Jim has the outside shaped and he stops turning to approach the dry board for a talk on tenon diameter and chuck jaws. He stressed getting a



near perfect

circle diameter

on the tenon since this turning was not going to be dried and re-turned. He also brought up the point that when changing jaws on your chuck the numbering on the chuck doesn't matter; just keep the jaws in the correct order. One through four, clockwise.



Continued on page 4

# The President's Turn

## **Letter from abroad:**

I am writing this on a train in Belgium, so this missive may be a bit short (Ok.... Stop cheering). As I have traveled around I have kept an eye open for turnings and I have been surprised at how few I have seen. There were a reasonable number of older turnings in museums and antique shops but I have seen almost no contemporary works.... The only thing I saw was a front window of a home with several very nice art turnings. Hmmmm.... Retire to northern Europe and set up shop...?



## **2019 Officers**

We are looking for nominees for club officers for 2019. It is not very hard to fulfill the responsibilities of most of the positions, but it makes the difference between having a club or not!! If you are at all interested in helping out and giving back to the club, please let us know. If you don't want to be an officer, there are still a lot of volunteer positions. By spreading the work among many, it makes it easy for everyone.

## **School Volunteers**

The 2018-2019 school year is in full swing and once again we are looking for volunteers to help out. We will be starting the Pen class soon and will need people to help teach the boys. I'll send an email with more details separately, but if you have any interest or even just questions, let me know. (You can also talk to Joe Martinka, Ray Hari or Gordon Patnude)

That's all for now. I look forward to seeing you at the October meeting.

Every good Turn deserves another

Paul

# 2018 Calendar of Events

January	February	March
Meeting: Wed. the 3rd	Meeting: Wed. the 7th	Meeting: Wed. the 7th
President's Challenge:	President's Challenge:	President's Challenge:
Turned Name Badge	Thin Walled Bowl	Lidded Box/Peppermill
Program: Dennis Lillis	Program: Mark Koenig	Program: Cindy Navarro
Green Thin walled Bowl	Lidded Box/Peppermill	Reconstructed Utensils
		Rudy Lopez 3/10
April	May	June
Meeting: Wed. the 4th	Meeting: Wed. the 2nd	Meeting: Wed. the 6th
President's Challenge:	President's Challenge:	President's Challenge:
For the Kitchen/not bowl	Top	Coloring a Turned object
Program: Sharpening	Program: Top Night	Program: Sanding
Turn-N-learn		Turn-N-learn
	Trent Bosch 5/19	
July	August	September
Meeting: Wed. the 11th	Meeting: Wed. the 1st	Meeting: Wed. the 5th
President's Challenge:	President's Challenge:	President's Challenge:
School Donation	a Bowl for Aesthetics	Collabotate/Training
Program: Jim Rodgers	Program:	Program: Jim Gott
Concepts of Design	Compare and Critique	Nat.Eg. Bowl/platter
	Picnic 8/14	Sam Angelo 9/9
October	November	December
Meeting: Wed. the 3rd	Meeting: Wed. the 7th	Meeting: Wed. the 5th
President's Challenge:	Challenge: Calabash	President's Challenge:
Nat.Eg. Bowl/platter	Program: Finishing	For the Holidays
Program: Dennis Lillis		Program:
Calabash		Christmas Party

## Jim Gott's Natural Edge Continued



Having created a precise tenon, Jim re-mounted the blank to create the bowl. The key point of Jim's demonstration was

tool control when turning a natural edge vessel. By its very nature you are forced to deal with cutting air and wood until you reach the lowest point of the blank. Jim maintains a bracing grip with his left hand on the tool rest as he approaches the blank. He continues to excavate the bowl until he has reached the lowest point of the blank and then checks the wall thickness for uniformity.



As he deepens the bowl Jim uses his home made depth gauge to check his progress. Another clever

trick here: Jim has glued a penny to the end of his depth gauge to help eliminate parallax error when judging the depth from the outside of the bowl. It is difficult to estimate the depth of natural edge vessels because of the opposing "wings" and frequent checks with the depth gauge help prevent making a natural edge funnel.

After reaching a satisfactory depth Jim removed the bowl from the chuck and the chuck from the lathe. He replaced the scroll chuck with a vacuum chuck he had brought along. Using the divot



left by the tailstock enter during initial roughing to center the bowl, he advanced the tailstock to seat the bowl on the vacuum chuck. The bowl is

now held securely and centered. Jim then went on to refine the foot of the bowl before trimming away the tenon to the merest nubbin, which he cleaved off with a skew chisel once off the lathe.



So, if you were paying attention during Jim's presentation, now you know how to turn a natural edge bowl!





## Meeting was called to order by Mark Koenig at 7:00 p.m.

**Visitors:** no visitors today

### **Mark made general announcements:**

- **CA GLUE** — **Tom Kenyon**, Get in touch with Tom at the break
- **Anchor Seal 2** — **John Whittier** has several gallons here at the HS. Let him know.

### **Staff Updates:**

- **Programs** — **Mark Koenig**
  - October meeting — Demo for Calabash bowl
- **Turn-N-Learn Sessions** — **Mark Koenig**, two more this year if enough people sign up.  
Can take up to 8 people per session. Information to be posted on the website regarding timing.  
A session starts at 9 AM, goes to noon.
  - September Turn-N-Learn — natural edge bowl (September 22)
  - October Turn-N-Learn — calabash style bowl (October 27)
- **Membership and Board Nominations** — **Gordon Patnude**, No new members since last month.  
Nominations for new year — VP staying, Treasurer staying, Secretary staying.  
Looking for nominee for President.
- **Video setup** — **Greg Peck**, described the donated monitor mounting, and the boom setup with many features. Thanks to Bob Gerenser for the monitor, thanks to Joe Martinka for mounting the monitor, thanks to Ray Hari and Paul for boom design ideas and help installing. And thanks to others who assisted.
- **Woodmeister** — **Dennis Lillis**, Wood event on September 29, with BBQ, 10 AM—1:00.  
Dennis has a line on madrone, spalted maple, birch, carob, silver maple, mulberry and some nice big pieces of walnut. **Give Dennis an idea if you can attend.**  
Mark will send an email blast regarding the event.
- Bob Gerenser mentioned an opening for the Newsletter Editor. He has termed out.

### **September President's Challenge & make-ups** — "Collaboration or training"

- *See the Member and their work in the President's Challenge photo section of this Newsletter.*  
**Raffle** — Raffle tickets drawn for ten pieces.

### **September Show and Tell** —

- *See the Member and their work in the Show & Tell photo section of this Newsletter.*

### **Break**

### **Presentation** — **Jim Gott** — **Natural Edge Bowl**

Jim gave a good presentation about turning natural edge bowls with many good tips along the way.

**Meeting adjourned**



**Sam Angelo**, aka “The Wyoming Woodturner” on his YouTube channel, gave an all day demonstration on September 9th at Santa Clara High School. This was another joint venture between Silicon Valley Woodturners and West Bay Woodturners, a collaboration that has proved very successful.

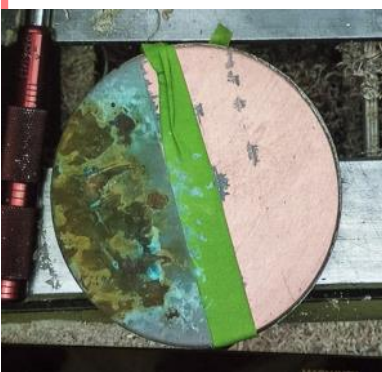
After roughing out an 8” bowl blank for warm-up, Sam moved onto the subject of embellishment. He showed a number of his round-on-square art pieces he created and pointed out the various techniques he employed in

different areas of his pieces, including embossing, coloring, gilding and metal leafing. He demonstrated how adding a highlight of paste Gilt to a darkened and embossed pattern can accentuate the embossing.

Sam showed his approach to using a Sorby spur wheel texturing tool to impart spiral patterns into the face and edge of a disc. This creates a stunning series of varying spiral design that “pop” with the application of marker pen ink to the spinning disc. He also uses a blade type chatter tool to add additional patterns to the work.

He also favors the use of metal leaf flakes applied judiciously to highlight a n area of an art piece and showed he applies the leaf.

Next up was a demonstration of the use of metal reactive paints for achieving a different color spectrum in wood finishing. A base metal paint coat is first applied to the work and allowed to dry. Sam used copper in his example. Next he daubed iron and more copper paint onto the dry area and sprayed the wet paint with a reactive agent creating an aged metal look to the piece.



Continued on  
Page 7



## Sam Angelo Continued



The afternoon session was mainly devoted to using stains applied to the inside of a hollowform to create patterns on the outside. Sam gave Chris Pytlik credit for developing this technique and Sam was showing us his adaptation of Chris's work. He worked with several turnings he brought and illustrated the effects of mixing primary colors through the wood. A significant take away here was Sam's revealing the importance of bleaching the turned form prior to applying stain to achieve maximum color intensity.



Sam's final turning session of the day was a small carving mallet that he partially turned and donated to the club. He also generously donated several others of the pieces he had been working on and a couple of his own from his demonstration collection. Thanks Sam!



# Turn-n-Learn Turning a Natural Edge Bowl 9-24-18 SCHS



# President's Challenge "Collaboration or Training"



**Oscar Wittrock, Jim Gott, John Whittier —**

## Three Bowls

After discussing, decided it is cocobolo wood, very hard and dense. Suggest air filter helmet, since wood emanates vapors.

Jim cored the bowls with One Way coring system. Cutter broke, stuck in the wood. Completed with McNaughton. Finish is mineral oil and bees wax. It sticks to the oily cocobolo.



**Milton West, Johnny Alias —**

## Twin Goblets

Walnut.

Turned inside, then outside, then inside, etc. to prevent bad catches on small end.

Legs are made of pewter.

Made a mold, cast them, then attached with screws.



**Dave Plemons, Kevin Lee —**

## V-neck Vase

A beautiful red gum eucalyptus vase to replace a glass vase that broke.

A design change happened during sanding, when the wood vase broke during sanding. :o(





# President's Challenge "Collaboration or Training"

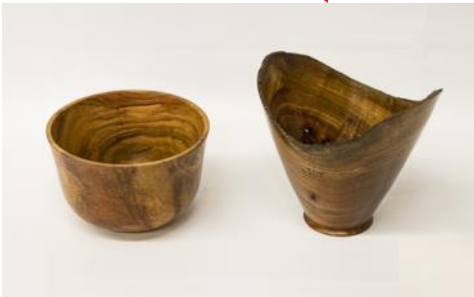


**Ray Hari, Dennis Lillis —**

Mimosa Bowl with Turquoise Inlay-  
Rough turned 3 months ago, then finished. With Dennis' help, inlay was put in. Dove tail tool used to make groove such that inlay material stays in place. Finish is Butcher Block Oil.  
<http://www.howardproducts.com/>



**Vase is School donation. Thanks!**



**Pete Zavala —**

Bowl and Vase, July and August make up  
Avocado vase (School Donation).  
Cracks corrected with sawdust and glue.  
Carob bowl (Critique).  
Finish is Waterlox on both.  
<https://waterlox.com/>



**Mike Lanahan—**

Bowl, August make up  
English walnut bowl for critique.  
No finish, but it is finished. ;o]

# Show & Tell



**Kevin Lee —**

## My First Hollow Forms

Mulberry, ash. Charlie lent me some hollowing tools.

Probably not what I'm gonna spend my time on. Finish is shellac.



**Jim Gott —**

## Platter with Textured Rim

Bay laurel rough turned, then boiled. Put in paper bag. One month later it was ready to turn! I love boiling!

Rim textured with Power Crafter (like a dental drill), on a Trent Bosch stand.

Finish is Wipe-On Poly.



**Bob Gerenser —**

## Salad Bowl and Servers

Segmented sycamore (light one) and sapele (dark one). Servers are sapele.

Finish is Mahoney's Walnut Oil. (food safe)

## Smaller Salad Bowl

Spalted Red Alder w/BWMO



**Ray Hari —**

## Olive Bowl

Olive wood from Ard Sealy collection. Finish is Butcher Block oil.



**John Fox —**

## Bottle Stoppers, Natural edge Bowl

Natural edge bowl blew apart. (USE FACE SHIELD).

Bottle stopper insert is stuck in the wood. Will figure how to remove it.



# Show & Tell



## Gordon Patnude — Pen for the Troops

Variation on Slimline.  
Wooden extension,  
instead of brass, glued to  
the lower blank. Put to-  
gether on the mandrel  
and turn all at once.



## Tom Schmida —

### 1. Cypress Natural Edge Vase

### 2. First Bowl

Bark flew off the vase. But came  
out ok.

Bowl is the first bowl I ever made  
(2005). All done with a round  
nose scraper.

Finish is beeswax and mineral oil



## Lynn Wubbels —

### Peppermills

Various peppermills on  
display on the table.

Finish is Aussie Oil..

Lynn showed grinder  
mechanism with PVC pipe  
extension, such that one  
can make a very tall  
peppermill.



## A Lesson Learned

My time in the shop is precious these days. So, I try to make the best of it. There are many reasons I love being in there. I certainly get lost when things are going well. Sometimes frustrated often challenged. And I end up with a few nice things sometimes. I'm not usually into breaking records but I just broke two records simultaneously. There was a piece in my shop for well over a year that had already been turned into a hollow form, with a threaded opening waiting for a top. It had fractal burning and a little bit of turquoise inlay. I don't think I ever had a partially finished piece sitting around that long. I spent a bit over a year staring at that thing trying to figure out what I was going to top it off with. I finally got around to it after getting around to a few other pieces first. I ended up making a very delicate Blackwood finial that I was quite proud of. It was on top of a Blackwood threaded top to match the curves of the hollow form.

So I finished it last night, polished it up with the three step Beall system and was very impressed and so was my wife who is my favorite critic.

For some reason, I put it back in the shop. I woke up in the morning and while getting ready for a bike ride, I had a bicycle mechanical problem. For some stupid reason I put the bicycle upside down on the bench right next to the finished turning. That voice

we have all heard saying "this is not a great idea" spoke to me but I did not listen. I bet you can see where this is now going.

So, yes, bicycle falls over, takes the hollow form with it, it hits the ground, breaks the finial in half and breaks the finial out of the top, breaks the threads, and cracks the hollow form right in half!

Second record broken: that is the shortest amount of time from completely finishing a piece to destroying it by accident that I have ever experienced.

So in the end, I learned a lesson that it's just stuff when we're done making it but the experience of getting lost in the process of producing it is maybe more important. (and to listen to that voice next time) It's like the monks working on a sand painting and spending all that focused energy adding beauty while trying not to ruin anything. Then, they drop their bicycle across the sand and wipe it all out. Except I do not think monks scream the same profanities that came out of me when that happened. It was not a Zen experience in the moment. Maybe next time.

So enjoy your time in the shop as it's just as important as the beautiful things that come out of it. And don't try to break these records.

Bob Bley

## Bandsaw Maintenance

I was making some relatively easy cuts with my 14" bandsaw, cutting 4" circles out of dry 8/4 stock, when everything came to a screeching stop. It threw the tire and blade from the top wheel. That was kind of weird I thought, maybe just a fluke. I remounted the tire and blade and proceeded. Replacing the tire was easy, and should have been a clue. If everything went fine after that, I wouldn't be writing this, so obviously it threw the tire & blade again. OK that tire was easy to get back on the wheel, so maybe they do stretch out over time. I had replaced the rubber tires with the urethane tires 5 years ago, I'd guess. I expected urethane to last much longer.

I'm pretty sure I had bought the nice, expensive, blue Carter tires before. They are a good solid name brand for bandsaw stuff. As I did more shopping research this time, I noticed that there were several tire widths for various bandsaw models. When I searched for my Rikon model the tire width was listed at 15/16". I measured my wheel, and sure enough 15/16" was correct. My old tires measured at 7/8" wide, and I could only find this width for 14" wheels in the Carter brand. Hmm, maybe size does matter. I ordered a generic urethane set from Polytech Designs, NJ on Amazon for \$36, vs. the \$50 Carter tires. If the generic set lasts 3 1/2 years or more, I win.

Urethane tires need to be stretched over the wheels, and to make them more pliable and slip on easier they recommend heating in 120F soapy water for 5 minutes before mounting them. This was an excuse to use a



sous vide cooker in the shop. It provided controlled, low temperature water recirculation for heating and holding them till I was ready. I used 128F just because that is what the temperature was from the water heater when I started. After clamping the wheel down, and clamping a tire in a couple places on the wheel, much grunting, straining and cursing the tires easily slid onto the wheels. Polytech even provided a tool to run around the wheel between the tire and the wheel to even out the tension on the tire. The next step is to readjust all the bandsaw guide settings.

I guess I've learned a few things from all of this:

1. Urethane tires do have a lifetime.
2. Size does matter, for bandsaw tires anyway.
3. Pay attention after the first oops. Maybe there was a reason.
4. Shopping brand names is no guarantee.
5. Kitchen appliances can be helpful in the shop.

Mike



# CLUB NOTES

## Officers, Staff, Volunteers and Contacts

<b>President</b>	Paul Rygard	(408) 866-0390	<a href="mailto:prygard@yahoo.com">prygard@yahoo.com</a>
<b>V.P./Programs</b>	Mark Koenig	(408) 888-4944	<a href="mailto:mskoenig@ieee.org">mskoenig@ieee.org</a>
<b>Prof. Demos</b>	Mike Lanahan	(408)926-9330)	<a href="mailto:Mikelan@aol.com">Mikelan@aol.com</a>
<b>Treasurer</b>	Joe Martinka	(408)735-7245	<a href="mailto:exegrec3@Yahoo.com">exegrec3@Yahoo.com</a>
<b>Secretary</b>	Greg Peck	(408) 623-9156	<a href="mailto:gregoreo@me.com">gregoreo@me.com</a>
<b>Newsletter Editor</b>	Bob Gerenser	(408) 262-5411	<a href="mailto:bob.gerenser@sbcglobal.net">bob.gerenser@sbcglobal.net</a>
	Greg Peck	(408) 623-9156	<a href="mailto:gregoreo@me.com">gregoreo@me.com</a>
<b>Hospitality</b>	Barbara Jones	(408) 257-9385	<a href="mailto:northbaj@att.net">northbaj@att.net</a>
<b>Membership Chair.</b>	Gordon Patnude	(408) 267-6789	<a href="mailto:gppatnude@comcast.net">gppatnude@comcast.net</a>
<b>Outreach Chair</b>	Gordon Patnude	(408) 267-6789	<a href="mailto:gppatnude@comcast.net">gppatnude@comcast.net</a>
<b>Photographers</b>	Jim Gott	(408) 265-9501	<a href="mailto:jgtimp@aol.com">jgtimp@aol.com</a>
	Mike Lanahan	(408) 926-9330	<a href="mailto:mikelan@aol.com">mikelan@aol.com</a>
	Steve Balsbaugh	(408) 262-1564	<a href="mailto:sbalsbaugh@att.net">sbalsbaugh@att.net</a>
<b>Property Mgmt.</b>			
<b>Librarian</b>			
<b>Webmaster</b>	Pete Zavala	(405) 849-2858	<a href="mailto:zavalawoodturning@gmail.com">zavalawoodturning@gmail.com</a>
<b>Site Prep</b>	Johnny Alias	(408) 227-2423	<a href="mailto:vet59@ix.netcom.com">vet59@ix.netcom.com</a>
	Milton West	(408) 729-6334	<a href="mailto:miltwest@sbcglobal.net">miltwest@sbcglobal.net</a>
<b>Audio/Visual</b>	Richard Scott	(408) 799-0005	<a href="mailto:rams1942@sbcglobal.net">rams1942@sbcglobal.net</a>
	Greg Peck	(408) 623-9156	<a href="mailto:gregoreo@me.com">gregoreo@me.com</a>
<b>Social Chair.</b>			
<b>Yahoo Groups</b>	Howard Cohen	(408)378-9456	<a href="mailto:howard687@yahoo.com">howard687@yahoo.com</a>

## Volunteer Instructors / Mentors

The turners below have graciously offered to open their shops to help members who want to learn to sharpen, try something new, or master a technique that just doesn't seem to be working. We all love to share. You just have to ask.

Willing to help? Contact Mike Lanahan to join this list.

**Jim Gott**, [jgtimp@aol.com](mailto:jgtimp@aol.com) , (408) 265-9501 sharpening, design, natural edge bowls, boxes, goblets, tool control, you name it. Anything but segmenting.

**Mike Lanahan**, [lanahan.mike@gmail.com](mailto:lanahan.mike@gmail.com) , (408) 926-9330 Pepper Mills, Segmented, and Shaving or Makeup Brushes.

**Dennis Lillis**, [denjlillis@gmail.com](mailto:denjlillis@gmail.com) , (408) 353-3821 Hollowing, sharpening, and coring.

**Gordon Patnude**, [gppatnude@comcast.net](mailto:gppatnude@comcast.net), (408)267-6789 Pen Turning and general turning questions.

**John Whittier**: [whit10506@aol.com](mailto:whit10506@aol.com), (408)761-3941sharpening, design, natural edge bowls, boxes, goblets, tool control, you name it. Anything but segmenting.



# 2018 IRONMAN

Ironmen are those who successfully complete all 12 President's Challenge projects for the year. Those who meet the challenge are awarded coveted and distinctive IRONMAN name badges. A blue bar in the accompanying chart means that person has completed the project for the month indicated. You needn't be a great turner, you just need to participate. Make something in our Challenge theme and bring it to the next meeting.

## Editor's Note

If I've somehow overlooked your President's Challenge entry, send me an e-mail at [bob.gerenser@sbglobal.net](mailto:bob.gerenser@sbglobal.net)

President's Challenge 2018	January Turned Badge	February Thin Walled Bowl	March Lidded Box or Peppermill	April: Kitchen Not a Bowl	May Top	June Coloring a Turned Object	July School Donation	August Bowl design	September Collaboration or Training	October Natural Edge	November: Calabash	December: For the Holidays
Alias, Johnny												
Balsbaugh, Steve												
Bonnet, Don												
Brown, Dave												
Fox, John W.												
Galli, Jerry												
Gerenser, Bob												
Gott, Jim												
Hari, Ray												
Havens, Brian												
Jones, Barbara												
Koenig, Mark												
Lanahan, Mike												
Lee, Kevin												
Levin, Gordon												
Lillis, Dennis												
Mackenzie, Colin												
Martinka, Joe												
Patnude, Gordon												
Plemins, Dave												
Rapp, Brandon												
Schmida, Tom												
Thomas, Larry												
West, Milton												
Wittrock, Oscar												
Zavala, Pete												

For a more detailed description of the President's Challenges, go to:

[https://groups.yahoo.com/neo/groups/SVWoodturners/files/Presidents Challenge/](https://groups.yahoo.com/neo/groups/SVWoodturners/files/Presidents%20Challenge/)

## IRONMAN Rules

- There are twelve challenges listed for the year and in order to qualify for Ironman you must show, by the end of the year, that you have completed all twelve challenges.
- Challenge entries should be shown at the meeting corresponding to the challenge schedule.

# SVW NEEDS YOU!

**It takes more than the officers** and program chairs to make our club function at its best. If your name's not in the column at right, we still need your help in other ways to manage some of the club's activities. This is a HELP WANTED ad, and we need you to respond. There are always things that need doing. In particular, we need:

- Volunteers for shop tours
- Volunteers to present/demonstrate at meetings
- Members to write up their profiles for the newsletter
- Short articles or Tips & Tricks for the *Chips & Chatter* newsletter

Please contact Mike Lanahan to volunteer and help make our activities happen.

**OTHER WOODTURNING CLUBS:** You may use materials in this newsletter for the benefit of other turners. Please credit Silicon Valley Woodturners and the newsletter month and year for any material you use, and mention our web site: [www.svwoodturners.org](http://www.svwoodturners.org). Note that if we've flagged an article as having been reprinted from another source with permission, you must secure that same permission in order to use that material.

## Join Silicon Valley Woodturners

Want to join a great group of turning enthusiasts in an atmosphere of sharing and camaraderie? Become a member of Silicon Valley Woodturners. We meet on the **First** Wednesday of each month. See page 2 for details. Drop in at any meeting and check things out. To join, contact John Whittier (see contact list), or just complete the application form below and mail with check to Grant. Learn more about our club on the web at [www.svwoodturners.org](http://www.svwoodturners.org).

### Silicon Valley Woodturners Membership Application

Please print and mail with a check payable to SVW for \$35\* individual (\$45\* family) to:  
Gordon Patnude, 1348 Whitegate Ave, San Jose, CA 95125 Phone: 253-820-8684-- email: [gppatnude@comcast.net](mailto:gppatnude@comcast.net)

Name \_\_\_\_\_

Address \_\_\_\_\_

City \_\_\_\_\_ State \_\_\_\_\_ Zip \_\_\_\_\_

Phone(s): home: \_\_\_\_\_ mobile: \_\_\_\_\_

Email \_\_\_\_\_ Website \_\_\_\_\_

Lathe(s): \_\_\_\_\_

Current Member of AAW? Yes \_\_\_ No \_\_\_

Member-ship*	Renewal	2 <sup>nd</sup> Quarter April - June	3 <sup>rd</sup> Quarter July - Sept.	4 <sup>th</sup> Quarter Oct. - Dec.
Individual	\$35	\$25	\$20	\$10
Family	\$45	\$35	\$30	\$15



# Sponsors



## Shavings & Sawdust

Join this Group for Home & Garden or  
Sawdust Session information.

Here are the details on Shavings:

Group home page: <http://groups.yahoo.com/group/Shavings>

Group email address: [Shavings@yahoogroups.com](mailto:Shavings@yahoogroups.com)



## CRAFT SUPPLIES USA

THE WOODTURNERS CATALOG

woodturnerscatalog.com • 1-800-551-8876

## WOODCRAFT®

Helping You Make Wood Work®

**Eric McCrystal**  
Store Manager

Woodworking Tools • Books • Supplies • Lumber • Classes

SEANNA WOODWORKS, INC.

d/b/a WOODCRAFT

40 El Camino Real

San Carlos, CA 94070

Phone: 650.631.9663

Fax: 650.631.9633

woodcraft561@mac.com

[http://stores.woodcraft.com/san\\_carlos](http://stores.woodcraft.com/san_carlos)



## North Woods

Wood for woodworkers  
and craftspeople

- Big Leaf Maple
- White Oak
- Black Walnut
- ... and more!

[service@nwfiguredwoods.com](mailto:service@nwfiguredwoods.com)

[www.nwfiguredwoods.com](http://www.nwfiguredwoods.com) (800) 556-3106

15% off online orders! use WOODTURNERS coupon code at checkout.



## The Sanding Glove®

17252 Big Rd, Bloxom VA 23308

Toll Free 1 (800) 995-9328

## Secured Storage for Autos, Boats and RVs

## Pedron's Storage

Storage Location: 6150 San Ignacio Ave., San Jose, CA 95119

408-269-5200

Serving San Jose  
For Over 40 Years!

[www.pedronsvstorage.com](http://www.pedronsvstorage.com)

Office Hours:  
Tues-Fri 10-5

Our outside storage facility has:

24 hour Cardkey Access • Monitored Electronic Surveillance

Competitive Rates • Month-To-Month Lease



1492 Soquel Ave

Santa Cruz, CA 95062

831-425-1492

Chocolates Worth Their Calories™



est. 1954

**Warehouses:**

Perris, Salt Lake City  
Berkeley, San Francisco  
Dry Kilns, Edinburgh, IN  
Corp. Office: San Francisco

930 Ashby Ave, Berkeley, CA 94710

[berkeley@macbeath.com](mailto:berkeley@macbeath.com)



# Next Meeting...

Join us Wed. Oct.3rd @7:00PM

**Santa Clara High School Woodshop**

3000 Benton St, Santa Clara, CA

It is right across the street from the Baptist Church sign, and just past (coming from Kiely) a No Entrance sign.

**Sept.Program:** Calabash w/ D.Lillis

**Sept.Challenge:** Natural Edge

**Dinner before the Meeting:**

Watch for email update



## FOR SALE

**Smocks**, SVW colors. \$30 (SVW patch not included). Contact John Whittier for details.

(408) 379-3722,

[turninghands@yahoo.com](mailto:turninghands@yahoo.com)