



CHIPS & Chatter

THE SILICON VALLEY WOODTURNERS NEWSLETTER

Warren Atkins pieces things together

Warren
Atkins talks
about
segmented
turning.



"If you turn a plain spalted bowl, you're lucky to get \$40 for the thing. Add a ring of diamond pattern segments around the top and you can get \$150!" That's how Warren Atkins, February's featured demonstrator from the West Bay club, described the commercial benefit of segmented turning.

And there's economy of stock. "If you want to make a nice, deep bowl it's hard to find a big enough blank. But using a standard 2" plank you can make as big a bowl as you want if you make it from segments." So that's what Warren

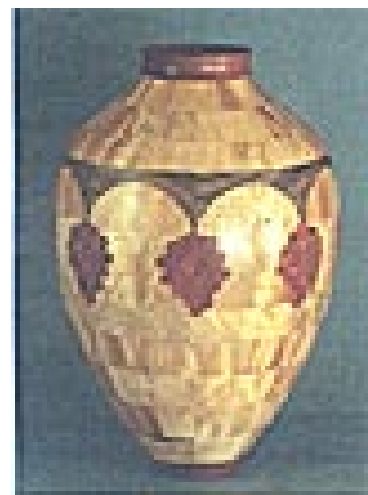
does, often removing a ring from the outside of his blank, under the curve of the bowl, then regluing it on top above a decorative segmented ring.

Warren kicked off his evening presentation by saying, "Everyone seems scared of segmented turnings." I've got hand tremors, and if I can do it with these hands then anyone can do it." Then he showed us slides and examples of his bowls and their components.

Warren was inspired by Bud Latven's and Addie Draper's article in issue 53 of *Fine Woodworking*, describing segmented turning techniques. He still refers back to the article. He was also inspired by world famous turner Ray Allen (deceased)

These days, he gets his design ideas from

Southwest Native American designs,



*"Grape arbor vase" of
maple, walnut, and
bloodwood.*

[Go to pg. 5](#)

PRES SEZ



Well, we did another great H & G Show. The booth looks very nice and gets lots of compliments. Our next show is June 7—9 at San Jose Convention Center. This will be our first time there and it should be great!

The Utah Craft Supply Symposium is the following weekend. If you've never been to one, consider it. There are lots of events and things to see. I'll post a signup sheet for those who want to drive. Maybe we can buddy up to save costs. I'll let you know when the fliers get here.

There is finally some action for us with the tree trimmers. So far we have had two Acacia

trees and a fig tree to share. Keep your eyes open for the tree trimmers. They are glad to get rid of the wood and would rather give it to us than take it to the dump. If you can, offer the person giving you the wood a BOWL turned from that tree. (S)he will be very pleased. We are looking for: peppertree, redbark eucalyptus, walnut, olive, big birch, Monterrey cypress, bottle brush, and boxelder. We are not looking for Italian cypress, that stuff is NASTY!@#\$\$%^&. Once it gets on you it is almost impossible to get it off you or your tools.

Our next challenge is something (turned) handled! Something (turned) with a handle, something with (turned) a handle, etc. Use your imagination and have fun. You might even win some \$\$\$, or "wannabeajudge?"

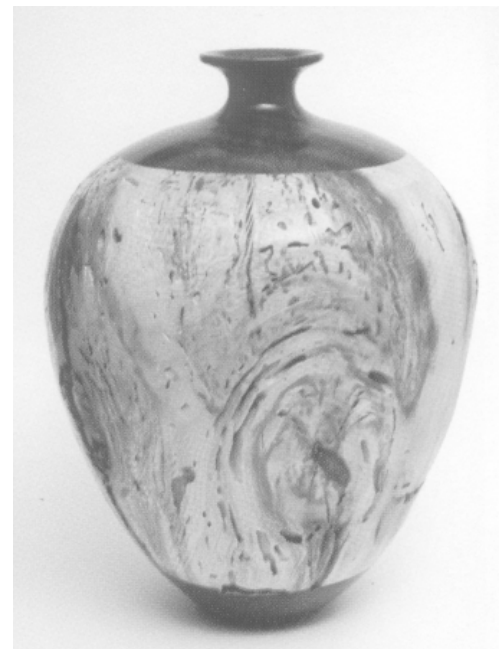
Rich

Next Meeting

Join us at our next meeting, on Wednesday, March 6th, at 7 P.M. Location: Rich Johnson's Woodturning Center in San Jose. Rich's Center is located behind his home at 14979 Joanne Ave., San Jose. From Hwy. 680, take the McKee Road exit East about 1.5 miles to Toyon Ave. Turn left and go 0.6 mile, turn right onto Joanne Ave.

Remember: Bring your chair and items for the *Show and Tell* portion of the meeting. We all learn together.

PRESIDENT'S CHALLENGE: SOMETHING WITH A HANDLE.



Offcuts

We have 29 paid members for 2002, and a few more who haven't gotten around to sending in their checks yet. I'm making the new roster at the end of this month, so to be listed, get your dues in. To rejoin for 2002, just pay by cash or check (made out to Jim Gott), and let Phil Roybal know you paid. Then you're set for the year.



HOME AND GARDEN SHOW

Rich Johnson shares the following story from the February show.

"it was my turn at the lathe on Sunday. I grabbed a piece of wood from the box without lookin' at it and took it to the lathe. 'Ok, what do you want to be?' The piece ended up between centers (RJ doin' a spindle???) Then the roughing gouge and I made the piece round. A small crowd started to gather to watch. Front

row center this little guy has his nose up to the window to see everything. The wood turned out to be wet fresh walnut with color and figure. I'm NOT goin' to do a spindle so I talked the wood into being a small Goblet. Took about half an hour, cuttin' sandin' shapin' etc All the while the little guy was still at the window. Eyes as big as possible lots of oooooos and aaaaas. I finished up the thing and made a real deep parting cut up under the base. Nice! (they even clapped) Darn thing looked pretty good for just foolin' around. I handed the piece out for the gathering to see. The little guy at the window comes up and says "Is that piece for sale?" .. Oh my goodness, now what do I do??? We talked for a minuet about the time it took, how hard it was to turn, good wood etc. This little guy wanted this goblet! So I told him I would sell it. Since I was workin' so hard at the lathe I was thirsty a whole bunch, so we agreed to sell the goblet for a cool drink of soda. The little guy was so excited, grabbed his Mom and Dad and took off. A few minuets later they were back and they had the biggest glass of cold soda you could imagine. So we made a deal. One happy little guy (and his family in the back round). Sometimes it is just the little things.... ya know!!!!!"

Show & Tell, President's Challenge

Show & Tell

Show and Tell was sparse this month. Phil Roybal led off with a faceplate bought for \$5 from William Noble through the Stubby Group.

Rich Dege completed the show with a tiny hollow turning he'd made from Fremont poplar.



Rich Dege with his tiny turning.

President's Challenge-A Craft Item

Tony Bryhan, Terry Feinburg, and Bob Nakano did the judging honors this evening, and proclaimed this the highest quality and most difficult competition so far. Phil Roybal opened with a jar opener he'd turned from Brazilian cherry, and



Phil Roybal's cherry jar lid opener



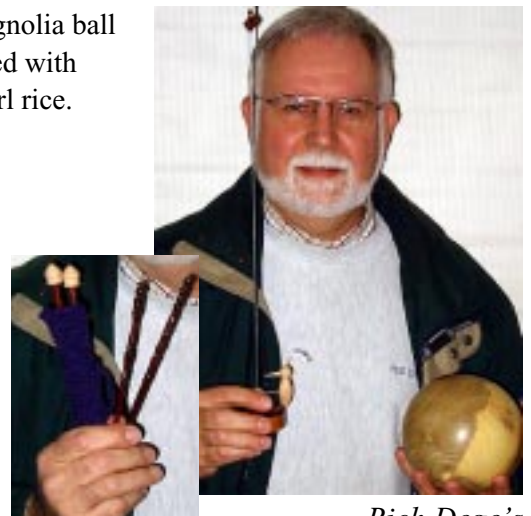
Harry Keller's box of "throughlaid" pens

finished with oil and wax.

Harry Keller came next with a box of six pens he'd turned using Ace's veneer throughlay technique.

Rich Dege brought a trio of entries: a set of knitting

needles and crochet hooks of cocobolo with loquat tips which tied for second place due to their fine workmanship. He also showed a toy woodpecker that pecked its way down a rod, and a hollow magnolia ball filled with pearl rice.



Rich Dege's prizewinning crochet hooks, woodpecker, and ball.

*Continued
from pg. 1*

particularly those of the Nez Pierce tribe.

It's important to make a detailed drawing when you start segmented turning. This helps you determine how thick a segment has to be, based upon where it falls in the bowl curve. Likewise, you must make the pieces long enough to contain the curvature of the bowl at whatever height they're inserted. See SVWoodturners FILE section for Warren's chart of segment lengths.

Atkins says that the pieces look very complex, but it doesn't take hours and hours to make them. He uses a Dubby jig and

recommends it highly. He can cut a 32-segment ring and glue it up without sanding adjustments. He's built a fence extension/stop for it to assure that pieces come out the same length. He uses this tool to set up a cut and cuts dozens of pieces at once to make his segments. Before he begins, he runs his stock through a thickness planer to insure that each element is the same thickness.

Warren uses a set of angle jigs to accurately sand pieces to their final angle if needed, but generally finds that, with a good saw blade, the angle is fine off the Dubby. Piece length is critical for thin walled vessels, so he calculates and cuts with care.

Once he's cut the segments, Warren glues his rings up inside pipe clamps. If the pieces show gaps with a dry clamping, he'll take one



Warren glues up angled patterns from layers of veneer or thin stock.



Complex elements can be built from simple parts.

to the sander and correct the angle if the difference is small. Then he glues up each ring with #2 Titebond glue. Once the piece is dry and faced off, he holds a 12" metal sanding disk up to the face of the spinning ring, sanding it completely flat and perpendicular to the lathe axis.

Some woods with long segments are prone to chip at the corners when turning, so Warren rounds off the sharp corners on a stationary belt sander.

Warren builds hollow vessels as two open bowls (see photos on SVWoodturners), sanding and finishing the insides separately with sanding sealer and Deft spray. When they're dry, he glues them together. He aims for wall thickness of around 5/16" for a 12" diameter bowl, and turns his work on a Woodfast lathe.

Warren achieves amazingly intricate patterns using simple techniques of cutting and regluing different woods together. The results are truly impressive. Thanks, Warren.



A decorative ring, ready to glue into place.

MENTOR PROGRAM

Our Mentor program now includes five volunteer mentors. Contact Phil Roybal to join the list. Members who need some help (but not formal lessons) can contact:

Rich Dege	(408) 272-8122
Jim Gott	(408) 265-9501
Rich Johnson	(408) 254-8485
Ron Newcomb	(510) 797-6665
Phil Roybal	(408) 255-4789

Go to Jigs, page 6.

*President's
Challenge,
con't. from
pg. 4.*

Dick
Pickering
took first
place with
one of his
wonderful
nutcrackers,
Herr
Drosselmeier,
made of
"Harrywood"
(soft
maple).It
carried a
second
nutcracker in
its hand and featured a tiny clock that kept
time.



*Dick Pickering took first
place with Herr
Drosselmeier*

Josh
Salesin
showed
chalice of live
oak and
walnu,
beautifully
turned and
finished, that
tied for
second place.



*Josh Salesin tied for second
with his chalice.*

Jesus
Moreno gave
Rich Johnson a small but very cute pig on
wheels (back massager) and a stamp bo, both of
cocobolo.

**Next month's challenge is something with
a handle.**

OFFICERS

President

Rich Johnson (408) 254-8485
latheart@pacbell.net

Vice-President

Craig Thorson (650) 341-7550
PropertiesByCraig@wwdb.org

Treasurer

Jim Gott (408) 265-9501
jgtimp@aol.com

Secretary /Editor

Phil Roybal (408) 255-4789
proybal@pacbell.net

STAFF REPORTS & OTHER BUSINESS

PRESIDENT (RICH JOHNSON)

The Home and Garden Show (2/15—17 in San Mateo) needs signups to work the booth.

TREASURER (JIM GOTT)

Income:

Videos	\$10.00
Membership	\$185.00
Checking interest	\$.30
Unclaimed H&G cash	\$39.00

Expenses:

H&G Flyers (Michelle)	\$59.00
January demo (Ace)	50.00
New Balance	\$1578.77

SECRETARY/EDITOR (PHIL ROYBAL)

We have 29 paid members for 2002. A new roster will be available at the March meeting, as well as on our SVWoodturners listserver.

COMMITTEE REPORTS

APPAREL (DICK PICKERING)

Dick Pickering has SVW hats at \$10 ea.

LIBRARY (JEFF THORSON)

We've acquired a new video, Alan Batty on the Skew Chisel.

NEW BUSINESS

NEW FACES

Herb Green of San Jose joined the club. He has five years of turning experience. Please welcome Herb.



FOR SALE

Even Roy wants to know... How did you do that?

Rich Johnson's Woodturners' Bootcamp.
Learn the basics, from chainsaw to polish. An
all day class. Book available. Sign up now.
(408) 254-8485.



RON NEWCOMB

- * Kiwi Tools Guaranteed woodturning tools
- * Sandpaper Eagle brand wet or dry
- * 3M Sanding Sponges 120 to 1500 grit

1.510.797.6665 ronwoodart@aol.com, or see
Ron at club meetings.

Jet mini-lathe with four tool rests and a
pin chuck for sale, \$250. Supernova
spindle adaptor also available. Contact
Craig Thorson, (650) 341-7550.



Rich Johnson's Woodturning Center

(408) 254-8485

Tee-shirts	\$12
Hats	\$11
Cups	\$ 6
<hr/>	
Hollowing tool set with handle, three tools and handle guide	\$100.
Pin Chucks	\$50
1" Saw Tooth Drill bit	\$5
Pen & Pencil kits available.	
Diamond wood & Color wood Blocks	\$12 bf
Diamond wood pen blanks pre-cut	\$1.50
Cocobolo sticks for pens	\$1.50
Lamp Kits	
Pepper mill kits	

Contact Rich Johnson