



CHIPS & Chatter



www.svwoodturners.org

THE SILICON VALLEY WOODTURNERS' NEWSLETTER

New Library Lending Rates: FREE!!

Starting in February there will be no charge to check out one or two of our many DVD's for one month. If you do not return the DVD(s) at the next meeting, you will be charged \$5.00 (per month) per DVD not returned

In This Issue	Page
Mike's Message	2
Guests & Visitors	2
President's Challenge	3
Show & Tell	6
Meeting Minutes	7
Tips & Tricks	8
2013 Ironmen	8
Ellsworth	9
Rich Johnson	10
Next Meeting	11
Symposia USA	12
Club Notes	13
Ironman 2014	14
2013 Newsletter Index	15
Ellsworth Schedule	16
For Sale	17
VP Notes	17

Rich's Way

By Bob Gerenser

We had a good turnout for the first meeting of 2014, where our host, Rich Johnson, demonstrated his method of bowl turning. Rich has been turning since 1970, starting on a Shopsmith, and has honed his methods to near production level efficiency.

Rich specializes in natural edge bowls and he demonstrated his work flow for us. Starting with a half log, Rich uses his bandsaw, with a 1/2" X 2 TPI blade, to rough out the blank. From there Rich moves to the drill press to bore a hole into the bark side of the blank. The size of the hole is determined by which pin chuck he will use.

Rich takes his blank to his "turning bay" to mount it on his Stubby lathe. Rich has refined his "turning bay"



concept to the point that everything he needs to turn and

finish a bowl is within an arm's reach. Standing at the lathe he can step to the right to his grinder, to the left for lathe accessories, or reach behind for a tool.

His sanding and finishing supplies are also within easy reach.

Rich uses a pin chuck almost exclusively to first mount his bowl blanks, though he will use a screw chuck on occasion. Over the years Rich has experimented with all manner of manufactured pin chucks and has developed many of his own design. For this demonstration he is using pin chuck jaws

fitted on one of his many scroll chucks. The blank is slipped on to the pin chucks and the tail stock,

with a live center, is brought up tight to the blank. By expanding the pin chuck in the bored hole the blank is now secured and ready to turn.



Rich starts with a roughing gouge to turn the blank into a cylinder. He acknowledges that this may seem



Continued on [Page 10](#)

Coming Attractions:

Feb 5th: Barry Uden from West Bay showing some of his specialized chucking techniques.

March 5th: Corwin Jones from BAWA "Turning spheres using the 42% rule." Some magnificent segmented spheres.

April 2nd: Merryll Saylan: "Form, Color, and Appropriate Finish"

May 7th: ? Ray Key: ~3 hour (6 - 9 pm) A great opportunity to see one of the best professional turning presentations out there. (There may be a small fee to help offset the cost.)

Mike's Message

Thanks for entrusting me with the position of SVW president for this year. I thought I was pretty safe from holding an office, as newsletter editor I couldn't possibly agree to take on additional responsibility. So then Bob Gerenser torpedoed my strategy, and volunteers to take on the newsletter. There I was, exposed and vulnerable, and along comes John Whittier with his arm twisting, and this is what you get. As Robert Burns put it: "The best laid schemes o' mice an' men/ Gang aft agley."

It is funny what you take for granted, until you have to do it. How does one decide what the president's challenges should be? This was the first thing I really had to do. How challenging should they be? How prescriptive vs. how open to interpretation should they be? Should they be chosen to follow specific presentations, so we could exercise what we were shown, and possibly learned in the previous meeting?

I started a brainstorming list, on which every idea I could think of was captured. Other people provided many ideas, which made the grand list as well. But what items to actually select? My guiding principles turned out to be: 1. Encourage participation. As fond as I am of seeing the regular participants, I want to see the results of the effort from more of our members. 2. Equipment friendly. I don't want to penalize anyone for the type of lathe they have. Hopefully size does not matter. 3. Member interaction/mentoring. Those of us who attend the Sawdust sessions that Rich holds feel we benefit from this enormously, and I hope more of us can experience that benefit from the club. From the brainstorming list, I then culled my final selection with these guiding

principles in mind. The goal is to get you to do something that you would not normally try. Please make them challenging to your level of expertise, and be safe.

The Picnic Challenge, with the \$100 prize, took some additional thought. All the above criteria apply, but with cash at stake, I wanted to move away from the more ambiguous artistic merit criteria, like Figure Skating, to a more quantitative measure, like Discus or Shot Put. After Phil Roybal asked if the disks had to be thrown by hand, and later having liability nightmares based on Pumpkin Chunking contests (current record 4,694.68 feet, almost 0.9 mile), I recognized the flaw in my definition. Please note the revision to the rules published in the list in the December 2013 newsletter.

We have a promising year, with world renowned turners David Ellsworth, and Ray Key coming to the Bay Area. Take a look at our upcoming program and activities listing that Dennis Lillis and John Whittier are putting together, with more to come. Thanks to Bob for taking over the newsletter. Please support him if you have any Tips & Tricks to share, review a video from our library, or want to write an article. It can be lonely as newsletter editor, without content coming in. I'm looking forward to the upcoming year, and hope you are as well.

Happy New Year,
Mike



Guests & Visitors

Greg Peck is planning on joining SVW



Peter Smith is a wood turner and author visiting from New Jersey



President's Challenge "Mushrooms"

TURNING OUT



Barb Jones - Apricot
Mushroom, no finish



Bob Gerenser - Garden
and Dish Garden
'Shrooms, various woods,
no finish



Colin Mackenzie - Wormy
live oak mushroom with
Tung Oil finish.



Dick Westfall - Mush-
rooms, Redwood-
Walnut-Manzanita, Fric-
tion polish



Gary Keogh - Mush-
room Family from
cherry wood on Red-
wood bark - 50/50



Gordon Patnude -
Birch branch &
broom-handle
mushrooms - pen
style friction finish



Turning Out continued



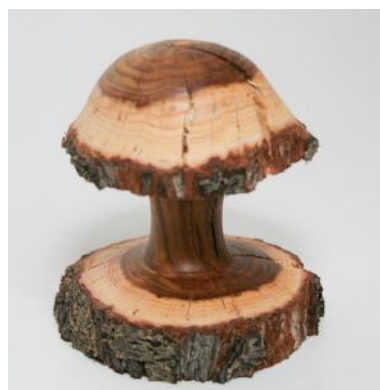
Herb Green - mushroom
rooms made from
strand board lacquer
finish



John Whittier - maple
top birch stem one coat
poly. Used galvanized
wire left over from an-
other project for in-
serting in the ground.



Johnny Alias - Mushroom, Olive wood, Finish sand-
ing sealer & wipe on polly



Milton West - mush-
room, bitter almond, an-
tique oil



Rich Johnson -
Mushroom - pep-
pertree - water-
borne finish



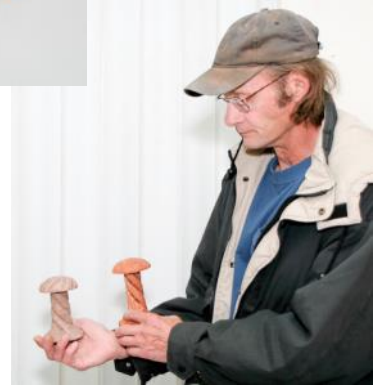
Turning Out continued



Jim Gott - Birch natural edged mushroom with lacquer sanding sealer finish



Scott Landon - Mushrooms - Redwood / carved / painted



Jim Benson - mushroom bottle stopper, spectrally, mylands hi polish



Tom Schmida - mushroom, olive wood, no finish



Dennis Lillis - Birch Mushroom



Show & Tell



Mike Lanahan - Trivet -
Turned with Maple &
Walnut lamination, fin-
ished with Waterlox
original.



Barb Jones - Two 1:24
scale maple and ebony
bowls, EEE and Shellawax



Colin Mackenzie - Red-
wood Burl Jar finish fric-
tion polish



Herb Green 2 - indus-
trial bowl from strand
board wipe on poly



Gary Keogh - Spalted
Silver i9Maple Nat
Edge Bowl - GF Salad
Bowl Finish



Show & Tell Continued



Scott Landon -
Redwood Bowl
from scraps /
carved edge



Tom Schmida
sycamore natural edge
bowl, 50/50 finish



Dennis Lillis - Boxwood
Box



Jim Benson - bottle
stoppers various
woods, Swarovski in-
serts, mylands hi fric-
tion polish.



Meeting Minutes

By Gary Keogh

Meeting was called to order at 7:00 PM

John Whittier introduced two people, Peter Smith and Greg Peck.

Peter is from New Jersey and a long time wood turner and has written articles for the AAW Journal. Greg is a new turner and will join our club soon.

Mike announced the position of Librarian is open and asked that anyone wishing to help out here please come forward. No one did. He also announced that videos can now be checked out without the usual \$2 fee. If however, it is not returned by or at the next meeting a \$5 charge will be levied.

Dennis Lillis (VP) gave a report on known and potential future demonstrators he is pursuing and the 2, 1 each, that BAWA and West Bay have secured (see Dennis' notes).

February (Saturday following the Super Bowl – Go 9ers) will see a wood event at John Whittier's house where coffee and doughnuts will be served. The event will start at 9:00 AM.

In April Shop tours will be conducted at, I believe, 2 or possibly 3 shops and will be on the other side of the hill + Dennis' shop off Summit Road.

Continued on [Page 11](#)

Tips & Tricks

A while ago I wanted to perform some cosmetic re-work on a small pot I had recently turned. There were several methods of holding the pot available to me; the good 'ol Jam Chuck, a vacuum chuck or, perhaps, even using a toggle and draw-bar. But the method I hit upon utilized a temporary plumbing fitting, known as a "Test Plug". It's used to check the integrity of a drain/waste line prior to installing the end item; a sink or tub.



Then I simply put the test plug into my pot and gently tightened the hex nut until I felt a snug fit. This I held with my chuck. I brought up my tail stock fitted with a

live center and non-marring blunt end and held the pot quite well.

I bought the test plug at a local general hardware store for about \$3.00. The plugs are also available in several other sizes. Bob Gerenser



The test plug is an expansion plug that consists of a rubber "donut" captured between two metal caps that have raised tapered centers. A bolt and wing nut captures the plates and donut

and when the wing nut is tightened, the donut is squeezed and expands outward.

It just so happens that a common test plug size is 1 1/2" dia, and that fit my pot nicely, thank you very much. I turned a simple spigot to fit my chuck jaws and drilled an appropriate through hole for the tightening bolt. I needed to use a longer bolt and I replaced the wing nut with a hex nut, to fit in my chuck's center hole.

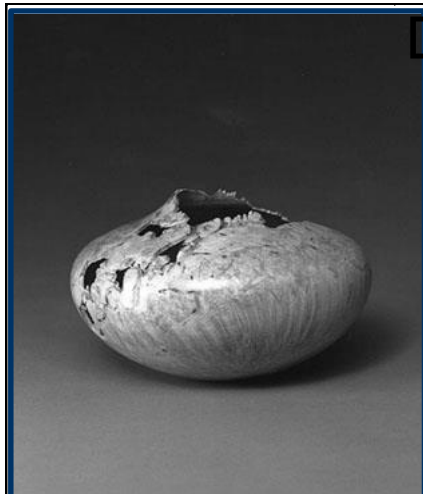
Got a slick Tip or Trick you'd like to share? Have a problem for which you need advice?

Submit or request a Tip or Trick to this section to bob.gerenser@sbcglobal.net

2013 Ironmen



Scott Landon, Rich Johnson, Bob Gerenser, Jim Gott, Milt West, Ton Schmida, Johnny Alias, Herb Green, Mike Lanahan, Gary Keogh



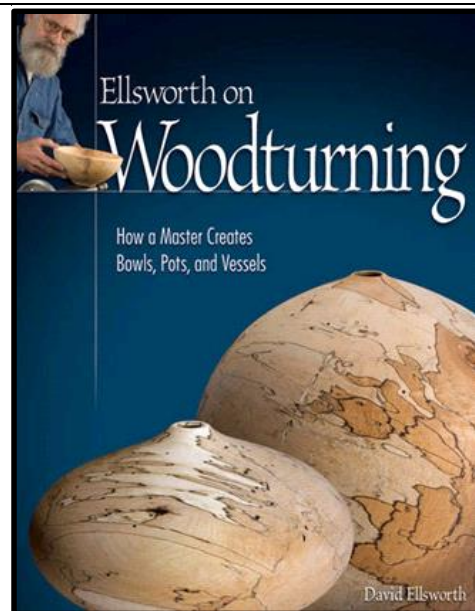
David Ellsworth

**Sunday, March 9, 2014
9:00 am to 5:00 pm**

**Covington School
201 Covington Rd, Los Altos**

WBAW Members: \$30

Non-members: \$40



The West Bay Woodturners are pleased to announce a demonstration by professional wood turner David Ellsworth in Los Altos. Dennis will provide an all-day demonstration at Covington School in Los Altos. The doors will open at 9:00 am. The general public is invited to attend.

Mark your calendars and don't miss this rare opportunity to spend the day with David Ellsworth, often referred to as the "Father of Modern Woodturning". David is unequalled in the turning world, but most turners already know this. If not, just Google "David Ellsworth Wood Turning" and you will likely get more than 21,300 hits, or visit his website at "<http://www.ellsworthstudios.com>" for more information.

David is most famous for his thin walled hollow forms turned thru a small opening, usually from spalted woods or with natural voids. His development of tools and techniques for thin wall "blind" hollowing revolutionized woodturning, and contributed greatly to the explosive growth of woodturning in the 1980's and 1990's. He is a founding member of the American Association of Woodturners (AAW) and served as its first President, nurturing and guiding it thru its early years. Without David's early commitment and unending support it is doubtful that the AAW would be the organization it is today! A heartfelt thanks from all of us, David!!

David's first book "Ellsworth on Woodturning" continues to receive rave reviews from the woodturning community.

For more information on this demonstration, contact Bob Bley, WBAW Program Officer, by email at rbley@dschnur.com, or by phone at 650-854-4939

Bring a chair as we may be short on chairs!

For additional information, see: <http://www.carolinamountainwoodturners.org/articles/430>

unorthodox, but emphasizes that he only uses the roughing gouge on the OUTSIDE, never inside a bowl. The Stubby lathe does not have a RPM read-out, nor does Rich need one; he sets the speed by sound. He adjusts the lathe until it sounds "safe and comfortable". At this point he has no idea what the bowl will look like and lets the wood determine the final shape. Using a set of dividers he has set using a storyboard, another time saving innovation, Rich scribes the tenon diameter on the bottom of the spinning blank. He uses a freshly sharpened bowl gouge to effortlessly create a pleasing profile and prepare the tenon for the next chucking operation. Rich then reaches for one of his 6" diameter drill-mounted disc sanders to give the just turned bowl a quick once-over to remove any tool marks. If he's happy with the looks of the bowl at this point Rich will sand through the grits with an inertial sander before reversing the bowl.



Rich admits to being an "aggressive" turner and he would shower the members in the audience with wood chips if he were to turn the inside of the bowl he started for us. Instead, Rich stops work on the walnut bowl and switches to a bowl he had previously turned to show how he uses a 2" sanding disc with a very soft pad to power-sand the inside of the bowl.



He goes on to mount the now sanded bowl on a vacuum chuck and finish the outside with his own blend of "not quite 50-50"; Deft, lacquer thinner and lacquer sanding sealer. The secret here is to keep a "wet edge", otherwise you will have a stain line. Having sold over 1600 bowls over the years, Rich has gotten his technique down pat!

Here are some of my sources:

Band saw blades bought from Valley Saw on Santa Clara St., San Jose

The Grinder was purchased from Woodcraft \$100

The Wheels are from D-Way tools \$185 each

The Saw tooth Drill is from ProMax, local is Japan Woodline (Almedia)

My Chuck is Vicmarc 120 and the jaws are from Craft Supplies

The Sanding pads 2" & 3" came from Craft Supplies

(www.woodturnerscatalog.com)

The foam I added came from the woodworking tool show, Craft Supplies has some also...

The Sandpaper 6" disks is Mirka from the internet \$20 a box of 50 per grit

Cut at John W for \$5 a box Or pre cut from Klingspor 2" & 3" \$\$\$

The inertia sander came from "Vermec" Australia \$80

The Vic Wood sander original came from Craft Supplies for \$19 now \$?

My turning tool preference is P & N Roughing gouge, Bowl Gouge and Spindle Gouge

1" Radius (Raffin) Scraper (Craft Supplies)

1/16th parting tool (originally Criss Stott) Now from Craft Supplies

The Orange Drills are from Harbor Freight (now \$10 - \$14)

The New Dust attachment on my lathe is now available from me @ \$160

The Shop Cabinets came from: We're Organized of Northern Ca.

The cost was \$100 per linier foot. www.wereorganized.net

My new Laser Engraver (capacity 24" x 36" x 18") is a Morn;

www.MornTechUSA.com

Rich's Rules

- ◆ Sharpen early and often
- ◆ Provide good lighting
- ◆ Wear adequate safety gear
- ◆ If yer gonna play in Texas, ya gotta have a fiddle in th' band, If yer gonna drink at Rich's, ya gotta have a coaster in yer hand!

Meeting Minutes Continued

The Secretary gave information regarding Badges. New badges will be made for all members. Iron Man indication will appear for those new qualifiers and current Iron Men will continue to sport that on theirs. These new badges will have the current AAW Logo replaced with our own SVW Logo to be more personal to our club. Hats and Patches will be given to all new members when they join the club. The Property Manager (guess who) will be responsible for that. Gary Keogh has become the keeper of the Key and Fob for the club's enclosed trailer that contains a number of things belonging to club. The trailer is parked in Marcus Moody's storage lot not far from Gary's house in South San Jose.

At 7:15 the President's Challenge offerings were presented by those members participating and following that Show and Tell was conducted.

Jim Benson and Milton West were the President's Challenge drawing winners and each got some nice wood.

The break was taken at 8:10 and after the break Dennis announced Rich Johnson as the demonstrator for the evening. Rich gave pointers and abbreviated demonstrations on many aspects of making a bowl including sharpening, chucking, tool use, making a tenon, sanding and finishing. Due to his vast collection of lathe accessories he demoed and showed many. The meeting was adjourned about 9:45.

Next Meeting...

Join us Wednesday, February 5th at 7:00 P.M., at Rich Johnson's Turning Center, located behind his home 14979 Joanne Ave., San Jose. From Hwy. 680, take the McKee Road exit East about 1.5 miles to Toyon Ave. Turn left and go 0.6 mile, turn right onto Joanne Ave. **Bring your chair.**

February Programs :

Barry Uden from West Bay showing some of

his specialized chucking techniques.

February President's Challenge: Alternate Chucking. ~~~~~

Dinner before the Meeting: For those who would like to get together for dinner before the meeting, we meet at 5:30 PM. at **Tacos Al Pastor #3** in the Toyon Center at McKee Rd and Toyon Ave. 428 Toyon Ave, San Jose, Phone: (408) 926-6514

Join Silicon Valley Woodturners

Want to join a great group of turning enthusiasts in an atmosphere of sharing and camaraderie? Become a member of Silicon Valley Woodturners. We meet on the **First** Wednesday of each month. See page 2 for details. Drop in at any meeting and check things out. To join, contact John Whittier (see contact list), or just complete the application form below and mail with check to Grant. Learn more about our club on the web at www.svwoodturners.org.

Silicon Valley Woodturners Membership Application

Please print and mail with a check payable to SVW for \$35* individual (\$45* family) to:

John Whittier, 961 W. Latimer Ave, Campbell CA 95008

Name _____

Address _____

City _____ State _____ Zip _____

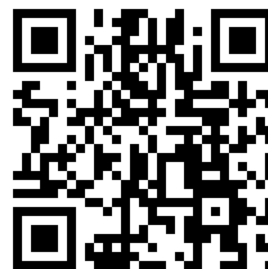
Phone(s): home: _____ mobile: _____

Email _____ Website _____

Lathe(s): _____

Current Member of AAW? Yes ___ No ___

Membership*	Renewal	2 nd Quarter April - June	3 rd Quarter July - Sept.	4 th Quarter Oct. - Dec.
Individual	\$35	\$25	\$20	\$10
Family	\$45	\$35	\$30	\$15



Sponsors



Shavings & Sawdust

Join this Group for Home & Garden or Sawdust Session information.

Here are the details on Shavings:

Group home page: <http://groups.yahoo.com/group/Shavings>

Group email address: Shavings@yahoogroups.com



Even Roy wants to know...

How did you do that?

Rich Johnson's

Woodturners' Boot Camp

Learn the basics, from chainsaw to polish. An all day class. Book available. Sign up now.
(408) 254-8485.



CRAFT SUPPLIES USA
THE WOODTURNERS CATALOG
woodturnerscatalog.com • 1-800-551-8876

WOODCRAFT®
Helping You Make Wood Work®

Eric McCrystal
Store Manager

Woodworking Tools • Books • Supplies • Lumber • Classes

SEANNA WOODWORKS, INC. Phone: 650.631.9663
d/b/a WOODCRAFT Fax: 650.631.9633
40 El Camino Real woodcraft561@mac.com
San Carlos, CA 94070 http://stores.woodcraft.com/san_carlos



North Woods
Wood for woodworkers and craftspeople

- Big Leaf Maple
- White Oak
- Black Walnut
- ... and more!

service@nwfiguredwoods.com
www.nwfiguredwoods.com (800) 556-3106

WOODCRAFT®
Helping You Make Wood Work®

Mike Cunningham
President

Voice: (925) 875-9988
Fax: (925) 875-9977
woodcraft521@sbcglobal.net
www.stores.woodcraft.com/dublin

Woodcraft Of Dublin
6044 Dougherty Rd.
Dublin CA 94568

Secured Storage for Autos, Boats and RVs

Pedron's Storage

Storage Location: 6150 San Ignacio Ave., San Jose, CA 95119
408-269-5200

Serving San Jose For Over 40 Years! www.pedronsvrstorage.com Office Hours: Tues-Fri 10-5

Our outside storage facility has:
24 hour Cardkey Access • Monitored Electronic Surveillance
Competitive Rates • Month-To-Month Lease




1492 Soquel Ave
Santa Cruz, CA 95062
831-425-1492
www.mackenziechocolates.com

Chocolates Worth Their Calories™



Warehouses:
Perris, Salt Lake City
Berkeley, San Francisco
Dry Kilns, Edinburgh, IN
Corp. Office: San Francisco

MG GUTIERREZ
Manager

2211 Ringwood Ave., San Jose, CA 95131
(408) 526-9663 Fax (408) 526-9664 Cell: (408) 640-7811
E-mail: mg@macbeath.com www.macbeath.com

CLUB NOTES

SVW Needs YOU

2014 Silicon Valley Woodturners Officers, Staff, Volunteers, and Contacts

It takes more than the officers and program chairs to make our club function at its best. If your name's not in the column at right, we still need your help in other ways to manage some of the club's activities.

This is a **HELP WANTED** ad, and we need you to respond. There are always things that need doing. In particular, we need:

- Volunteers for shop tours
- Volunteers to present/ demonstrate at meetings
- Members to write up their profiles for the newsletter
- Short articles or Tips & Tricks for the *Chips & Chatter* newsletter

Please contact Bob Gerenser to volunteer and help make our activities happen.

President	Mike Lanahan	(408) 926-9330	Mikelan@aol.com
V.P./Programs	Dennis Lillis	(408) 309-8060	denlillis@verizon.net
Treasurer	Dick Westfall	(831) 688-2687	r_westfall@msn.com
Secretary	Gary Keogh	(408) 281-9054	gkeogh@sbcglobal.net
Newsletter Editor	Bob Gerenser	(408) 262-5411	bob.gerenser@sbcglobal.net
Hospitality	Thelma Mackenzie	(831) 425-1514	tm@jknvl.com
	Colin Mackenzie	(831) 425-1514	colin@mackenzieschocolates.com
Photographer	Jim Gott	(408) 265-9501	jgtimp@aol.com
Property Mgmt.	Gary Keogh	(408) 281-9054	gkeogh@sbcglobal.net
Librarian	Jim Benson	(831) 475-5615	jimlbenson@yahoo.com
Webmaster	Rich Johnson	(408) 254-8485	Rich@latheart.com
Site Prep	Johnny Alias	(408) 227-2423	vet59@ix.netcom.com
	Milton West	(408) 729-6334	miltwest@sbcglobal.net
Membership	John Whittier	(408) 379-3722	turninghands@yahoo.com
Audio/Visual	Richard Scott	(408) 799-0005	rams1942@sbcglobal.net

Sharing Knowledge

MEMBERS: Please contribute your expertise to our newsletter. The editor will help you get your article ready if need be. Deadline is one week after our club meeting.

OTHER WOODTURNING CLUBS: You may use materials in this newsletter for the benefit of other turners. Please credit Silicon Valley Woodturners and the newsletter month and year for any material you use, and mention our web site: www.svwoodturners.org. Note that if we've flagged an article as having been reprinted from another source with permission, you must secure that same permission in order to use that material.

Volunteer Instructors / Mentors

The turners below have graciously offered to open their shops to help members who want to learn to sharpen, try something new, or master a technique that just doesn't seem to be working. We all love to share. You just have to ask. Willing to help? Contact Mike Lanahan to join this list.

- Jim Benson (831) 475-5615
- Jim Gott (408) 265-9501 sharpening, design, natural edge bowls, boxes, goblets, tool control, you name it. Anything but segmenting.
- Rich Johnson (408) 254-8485 all type to turning support available from beginner to Professional.
- Mike Lanahan (408) 926-9330 Pepper Mills, Segmented, and Shaving or Makeup Brushes.

IRONMAN

Ironmen are those who successfully complete all 12 President's Challenge projects for the year. Those who meet the challenge are awarded coveted and distinctive IRONMAN name badges. A blue bar in the accompanying chart means that person has completed the project for the month indicated. You needn't be a great turner, you just need to participate. Make something in our Challenge theme and bring it to the next meeting.

Editor's Note

If I've somehow overlooked your President's Challenge entry, send me an e-mail at

President's Challenge 2014	January Mushroom	February Alternate Chucking	March Square Bowl	April Sphere	May Collaborative/Teach *	June Not Wood	July Inlay	August Complimentary Pieces	September Helix, Spiral or Threaded	October Different Model Lathe	November Lidded Box	December For The Shop	Picnic Flying Disc
Alias, Johnny													
Benson, Jim													
Gerenser, Bob													
Gott, Jim													
Green, Herb													
Johnson, Rich													
Jones, Barb													
Keogh, Gary													
Lanahan, Mike													
Landon, Scott													
Lillis, Dennis													
Mackenzie, Colin													
Patnude, Gordon													
Schmida, Tom													
West, Milton													
Westfall, Dick													
Whittier, John													

For a more detailed description of the 2013 President's Challenges, go to:
<http://groups.yahoo.com/group/SVWoodturners/files/Forms/>

IRONMAN Rules

- There are twelve challenges listed for the year and in order to qualify for Ironman you must show, by the end of the year, that you have completed all twelve challenges.
- Challenge entries should be shown at the meeting corresponding to the challenge schedule.
- Entries may only be shown for one challenge.

2013 Newsletter Index

Topic	By	Month
AAW Liability Insurance Update		January
Challenge - Thirteen		January
New Web Site	Rich Johnson	January
Program - Brian Havens - Multi-axis Turning	Brian Havens	January
Tips & Tricks - Excel-ent way to Design Segments	Howard Cohen	January
AAW Liability Insurance Resolution		February
Challenge - Off-Axis		February
Non-Profit Status Approved		February
Program - First Aid in the Workshop	Dr. Pat Sullivan, MD	February
Tips & Tricks - Extended Chuck Jaw Change Made Easier	Jim Gott	February
2012 Chips & Chatter Index		March
Challenge - Two of a Kind		March
Mike Jackofsky Hollowing Demo at BAWA		March
Program - Bangle Making	Lonnie Hurst	March
Richard Raffan Demo at David Marks'		March
Time to Stop? When is it time to Stop Turning?	Colin Mackenzie	March
Tips & Tricks - Finishing the Ends of Eggs	Mike Lanahan	March
Challenge - Raindrops		April
Program - Designing with the Log at Hand	Chuc Nowark	April
Tips & Tricks - Sanding Inside Large or Unusually Shaped Vessels	Chuc Nowark	April
Challenge - Wearable		May
Check it Out - Segmented Patterns, by Curt Theobald	Jim Benson	May
Doug Fisher Demo		May
Program - Spirals	Dottie Bang	May
Tips & Tricks - Disk Collet Chuck	Bob Gerenser	May
Why Go to Demos?	Mike Lanahan	May
AAW Newsletter Award		June
Challenge - 2 Joined & Different Woods		June
Program - Off-Center Turning Using Eccentric Chucks	Rich Johnson	June
Sunnyvale reNews - Green Neighbors	Jack, John & Oscar	June
Tips & Tricks - Wood Lathe as a Very Large Hole Cutter	Mike Lanahan	June
Challenge - Off-Center		July
Check it Out - Intro to Segmented Turning, by Curt Theobald.	Jim Benson	July
Our Programs Need Your Help	Colin Mackenzie	July
Program - Carbide Tools	Mike Cunningham	July
Tips & Tricks - Trivet	Mike Lanahan	July
Challenge - Pen, Not from a Kit		August
Program - Elliptical Turning	Ard Sealy	August
Tips & Tricks - Band Saw Sled	Bob Gerenser	August
Understanding Wood	BAWA Program	August
Challenge - Whistle, Flute, Noise Maker ...		September
Mike Mahoney Demo	Mike Lanahan	September
Program - Top Night		September

2013 Newsletter Index

Continued

Topic	By	Month
Tips & Tricks - CA Repair	Herb Green, Dennis Lillis, Mike Mahoney	September
Tips & Tricks - Carbide Cutter Screw Care (Camellia Oil)	Dennis Lillis	September
Tips & Tricks - Rock Forecast	Jim Donovan	September
Tips & Tricks - Safety	Mike Lanahan	September
Challenge - Inside Out		October
Program - Bringing your Turning to the Next Level	Jim Gott	October
Tips & Tricks - No More Lifting	Jim Gott	October
Challenge - (December) Miniature, must fit inside a Ping-Pong Ball		November
Challenge - (November) Nut, Pod or Seed		November
Challenge - (Picnic) Hollow form fits Inside 6"x6"x6" Box, extra points for Max Volume		November
Mark Gardner Demo	Mike Lanahan	November
Program - Woodturning with a Strobe	Bob Bley	November
Tips & Tricks - Smock, Smock!	Dan Grebinski	November
2014 President's Challenge List	Mike Lanahan	December
Christmas Party		December
Finishes - Reversible vs. Non-Reversible	Alan Noel	December
Sunnyvale Sun Article on SVW		December
Tips & Tricks - Drill Chuck Removal	Gary Keogh	December

Ellsworth's Bay Area Schedule

Thursday, March 6	NorCal Woodturners (Sacramento)
Friday, March 7	Wine Country Woodturners (Sonoma)
Saturday, March 8	Bay Area Woodturners (Pleasant Hill)
Sunday, March 9	West Bay Woodturners (Los Altos)

SYMPOSIUM SCHEDULE ACROSS THE USA

Date	Symposium	Contact Info
May 15-17, 2014	Utah Woodturning Symposium, Utah Valley University campus in the UCCU Events Center	www.utahwoodturning.com
June 13-15	AAW Symposium, Phoenix AZ	

Notes from the Vice President:

Special Events: (inputs are appreciated.)

Some of the ideas on the docket are:

Wood Event at John Whittier's Sat after the Supor Bowl.

Shop Tours: probably just two. One in the Spring on the Santa Cruz side ~ Sat in April. then again in the Sept time frame in San Jose area.

In addition, the idea of some charity oriented activities such as donating turned bowls for Second Harvest Food Bank (think 'harvest moon or October time frame) and/or turning pens for the troops (informal gatherings to turn some pens in honor of the sacrifice those in the armed forces make for all of us. Veterans Day timeframe).

Dennis Lillis

FOR SALE

Lathe

Brand new Delta Midi 46-460 still in box with all accessories/ paperwork. List on Amazon/Web \$699. Asking \$625 obo. Will deliver in the peninsula.

Contact Arin Chang: 650-302-8255,

arin-chang@burnwater.com



Lathe—Jet 16-42 for sale. Contact Jim Benson (831) 475-5615, jimlbenson@yahoo.com

Homelite Chainsaw with a 24" bar of gas since. \$50.00 and it is yours. Ard Sealy, asealy@pacbell.net, Cell: 916-871-4626

Bandsaw Cutting Round Disk Sets, numbered, with center holes

Select a disk size appropriate to the size blank you want to bandsaw from a log, and secure it to the log through the center hole to the log with a wood screw, and cut outside the disk with the saw for an opti-

mally sized and shaped turning blank. These sets of 1/4" thick MDF disks increment by 1 inch from 4" to either 12" or 20", depending on the set. 4"-



12" set (shown), \$14, or the 4"-20" set, \$20. Contact John Whittier for details. (408) 379-3722, turnturninghands@yahoo.com

Turning Smocks, SVW colors. \$30 (SVW patch not included). Contact John Whittier for details. (408) 379-3722, tuinghands@yahoo.com



Moving sale:

(1) For sale: JET 1442 Lathe at \$750, also (2) Several wood turning tools and (3) Vacuum pump and motor assembly. Make offer! Contact Sharod Broadhead 408-597-7402, or e-mail: sgib@comcast.net



Heartwood Concepts Dust Collector. This is the dust collector system Bob Bley showed in November, and is available from Rich Johnson. \$160 Rich@latheart.com

