



CHIPS & Chatter



THE SILICON VALLEY WOODTURNERS' NEWSLETTER

3M Abrasives



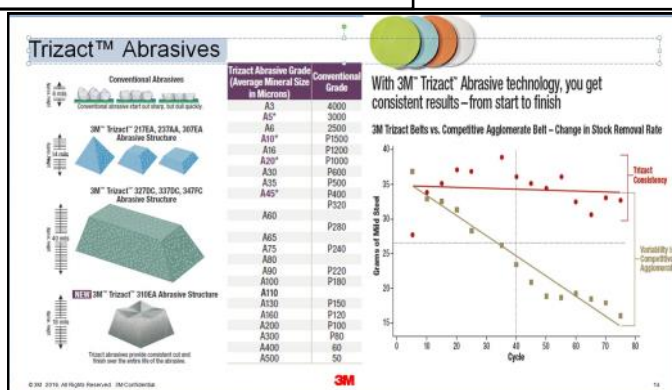
Mike Sooder, from 3M, delivered a PowerPoint presentation on abrasives most suitable for sanding wood. After a brief introduction to the manufacturing process and various grading systems, Mike spent most of the time describing a couple of 3M's high end abrasive

products,

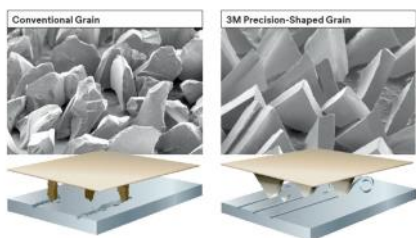
among them: Cubitron and Trizact. Both products feature carefully controlled grain geometry and are designed to provide excellent wear characteristics. While these features probably play well to industrial users, it remains to be seen whether the hobby user would reap noticeable benefits from them.

Mike addressed several additional 3M products and provided samples of some of them.

Club members may view Mike's presentation by visiting our Yahoo Groups site and choosing "Files" then "**Silicon Valley Woodturners 2016.pptx**"



3M Cubitron™ II Product family
Grades: 36+ thru 220+ (video)



© 2011 3M. All Rights Reserved. 3M Confidential.

3M

The February Program will be:

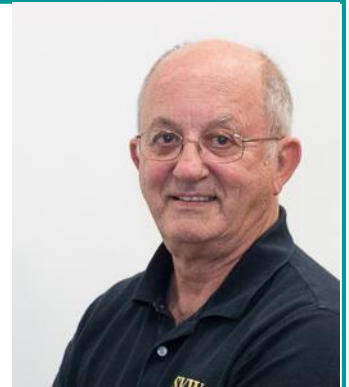
Jim Rodgers demonstrating a new version of a box with a threaded lid, and several chattering or decorating tools

In This Issue	Page	In This Issue	Page
3M Abrasives	1	Adding Decorations	10-13
John's Message	2	Meeting minutes	14
Selected Symposia	2	Tree of the Month	15,16
Calendar of Events	3	Sponsors	17
Eric Lofstrom Flyer	4	Club Notes	18
President's Challenge	5-7	Ironman	19
Show & Tell	8,9	Tips & Tricks	21

John's Message

Last year there were 21 club members participating in President's Challenge. Of those who participated nine members earned the Iron Badge for showing up every month with their President's Challenge. Those nine are as follows: Johnny Alias, Jim Gott, Brian Havens, Gary Keogh, Mike Lanahan, Gordon Patnude, Paul Rygaard, Milton West and Pete Zavala.

Next month's President's challenge is Bowl. Want to earn the Iron Badge you can by completing all 12 challenges. You can make up the previous month at any time during the year. Would not want a vacation or other circumstance keep you from earning this honor. I hope to more participation this year. I have never made the Iron Badge list but I plan to this year.



Selected Symposia & Exhibits

Utah Woodturning Symposium
May 12, 2016 to May 14, 2016
Orem, Utah
<http://utahwoodturning.com>

AAW 30th Annual International Symposium
June 09, 2016 to June 12, 2016
Atlanta, Georgia
<http://woodturner.org/?page=2016Atlanta>

American Craft Council San Francisco Show
August 05, 2016 to August 07, 2016
San Francisco, California
<http://craftcouncil.org/post/2016-american-craft-council-shows>

Fourteenth Ornamental Turners International Symposium
September 24, 25, 26 & 27 - 2016
Denver, Colorado
<http://www.ornamentaltturners.info/Community/symposium.php>

5th Segmenting Symposium
October 27-30, 2016
Marriott Quincy, Quincy MA
<http://www.segmentedwoodturners.org/symposium.php>

2016 Calendar of Events

<p style="text-align: center;">January</p> <p>Meeting: Wed. the 6th</p> <p>President's Challenge:</p> <p style="text-align: center;">Spindle</p> <p>Program: Mike Sooder</p> <p style="text-align: center;">3M Abrasives</p>	<p style="text-align: center;">February</p> <p>Meeting: Wed. the 3rd</p> <p>President's Challenge:</p> <p style="text-align: center;">Bowl</p> <p>Program: Jim Rodgers</p> <p style="text-align: center;">Treaded Boxes</p> <p style="text-align: center;">Feb 20, Eric Lofstrom</p>	<p style="text-align: center;">March</p> <p>Meeting: Wed. the 2nd</p> <p>President's Challenge:</p> <p style="text-align: center;">Lidded Turning</p> <p>Program: Jon Sauer</p> <p style="text-align: center;">Ornamental Turning</p>
<p style="text-align: center;">April</p> <p>Meeting: Wed. the 6th</p> <p>President's Challenge:</p> <p style="text-align: center;">Goblet</p> <p>Program: Phil Roybal</p> <p style="text-align: center;">How to turn a high performance top</p>	<p style="text-align: center;">May</p> <p>Meeting: Wed. the 4th</p> <p>President's Challenge:</p> <p style="text-align: center;">Top/Toy</p> <p>Program:</p> <p style="text-align: center;">Top Night</p>	<p style="text-align: center;">June</p> <p>Meeting: Wed. the 1st</p> <p>President's Challenge:</p> <p style="text-align: center;">Natural Edge</p> <p>Program: Dennis Lillis</p> <p style="text-align: center;">Hollowing Tools & Techniques</p>
<p style="text-align: center;">July</p> <p>Meeting: Wed. the 6th</p> <p>President's Challenge:</p> <p style="text-align: center;">Plate/Platter</p> <p>Program: Bob Gerenser</p> <p style="text-align: center;">Hollowing DIY Visual Aide</p>	<p style="text-align: center;">August</p> <p>Meeting: Wed. the 3rd</p> <p>President's Challenge:</p> <p style="text-align: center;">Hollow Form</p> <p>Program:</p> <p style="text-align: center;">Under Consideration</p>	<p style="text-align: center;">September</p> <p>Meeting: Wed. the 7th</p> <p>President's Challenge:</p> <p style="text-align: center;">Craft Item</p> <p>Program:</p> <p style="text-align: center;">Open</p>
<p style="text-align: center;">October</p> <p>Meeting: Wed. the 5th</p> <p>President's Challenge:</p> <p style="text-align: center;">Artsy</p> <p>Program:</p> <p style="text-align: center;">This Space For Rent</p> <p style="text-align: center;">Oct. 20 Brad Adams</p>	<p style="text-align: center;">November</p> <p>Meeting: Wed. the 2nd</p> <p>President's Challenge:</p> <p style="text-align: center;">Ornament</p> <p>Program: Bob Bley</p> <p style="text-align: center;">Fractal Burning</p>	<p style="text-align: center;">December</p> <p>Meeting: Wed. the 7th</p> <p>President's Challenge:</p> <p style="text-align: center;">Favorite</p> <p>Program:</p> <p style="text-align: center;">Christmas Party</p>

Silicon Valley Woodturners & West bay Woodturners Present

	<h2>Eric Lofstrom</h2> <p>Covering so many topics!</p>	
	<h2>Saturday Feb 20th</h2> <p>Santa Clara High School Wood Shop, 3000 Benton Street, Santa Clara.</p>	
	<p>Admission is \$20 for Members and Spouses (Includes lunch for those who sign up in advance) \$30 for Non Members All Students are Free! Co Sponsored by WBAW and SVW</p>	
		

The West Bay Woodturners and Silicon Valley Woodturners are pleased to announce an all-day demonstration by professional Eric Lofstrom at Santa Clara High School Wood Shop, 3000 Benton Street, Santa Clara. The doors will open at 8:30 am. Demo starts at 9 AM and goes to 4 PM.

The general public is invited to attend. The admission fee for this demonstration has again been deeply discounted and is being sponsored by the two clubs.

Eric will be covering many topics so there will be something for everyone. Topics include **Spindle, Endgrain & Facegrain Technique Building Treasures. Endgrain Boxes, Chatter techniques, square rimmed bowls**

For more information on this demonstration and to sign up for lunch, contact Mike Lanahan, SVW Program Officer, by email at mikelan@aol.com, or Bob Bley at rbley90@gmail.com

Monthly Challenge "Spindle"



Johnny Alias,
Wool Spindel,
apple wood



Mike Lanahan, pen
Stabilized
Redwood Burl



Gary Keogh, Two whistles,
microcrystal wax bowl finish



Greg Peck, Kendama
(standard size), bocote wood,
50/50 with Tripoli buff +
white diamond polish finish



Monthly Challenge "Spindle"



Jim Gott's Acrylic
pen, held by
Gordon Patnude



Gordon Patnude,
pens w BLO + CA



Bob Gerenser,
Lathe Tool Handle
w/ custom insert.
Diamondwood, w/o poly



John Whittier,
Coffee Mug.
Walnut, 4 coats w/o poly



Monthly Challenge "Spindle"



Oscar, Pen



David Brown,
Pepper Grinder



Joe Martina
Self Defense Poker, Poplar.
TIME FOR A NEW LATHE



Paul Rygaard,
Handles.



Milton West,
Conifer Trees,
EEE ultra shine



Show & Tell



Mike Lanahan, English Walnut Bowl, from the Farmington Historical Foundation, roughed out in demo by Glen Lucas, 11 1/4" x 4 1/2":



Gary Keogh, Double Walnut Bowl, w/ GF Salad Bowl finish, and Spur Drive Installer tool as seen in AAW magazine + an easy way to make a tool handle ferrule.



Bob Gerenser, (2) Five Piece Boxes, Red Gum, Silver Maple & Redwood Burl, Red Gum (stained), Valley Oak (stained) & Maple Burl, w/o poly finish. Soldering Iron Cleaner, corian w/ scotch brite.



Show & Tell



John Whittier, Old
Growth Redwood Bowl
w/ 5 coats w/o poly



Charlie Beldon, Multi-axis,
design in 3D



Joh
Growt
w/ 5



Paul Rygaard,
My first turning & KC Woodturners



David Brown, Sample Bowls from
John Beaver demonstration

Adding Decorations to a Bowl

By Fred Holder

I don't turn a lot of bowls each year, perhaps 12 to 15 at the most, and often they are small bowls that are never finished because they were used to test a tool or show a student how to turn a bowl. I seldom apply any decoration to a bowl, but occasionally I do get an urge to try something different. This story is about such an occasion.

Nearly two years ago, I had rough-turned and cored a nice 10 inch maple bowl. I decided to finish it and do some form of decoration on it. The decision was to put a circle of 24 dots of a contrasting wood on the top of the rim of the bowl. So, when I finished turning the bowl, I left the top of the rim wider than I normally would.

This was shortly after I acquired one of Richard Benham's Rim Chucks so I tried using the Rim Chuck to turn the foot of this rough turned bowl to fit my Nova Chuck with large jaws. The bowl was a bit warped on top and somewhat out of round; however, it fit nicely into the Rim Chuck so I could turn the foot to fit my chuck (see the photo) below.

I never trust any of the reverse-chucking devices completely and normally give additional support with my cup-shaped live center as shown in the photo.



Using a Rim chuck to turn the foot of my rough turned bowl.

With the foot turned to fit into the chuck, I mounted the bowl in the chuck and final turned the outside and the inside. Incidentally, I used the cup-shaped live center to support the bowl in the Nova Chuck also. This allows more aggressive turning without concern of losing the bowl from the chuck.



This information is provided by *More Woodturning Magazine*. Please visit their web site:
www.morewoodturningmagazine.com

Adding Decorations to a Bowl

By Fred Holder

Turning the outside of the bowl when mounted in the Nova Chuck.



This cup-shaped live center doesn't mar the bowl's surface when used as support for the chuck.

I used some reddish colored wood that we had in inventory. I don't know its name because it came from a scrapped-out crate. So I just call it "Crate Wood". This board was 3/4" thick. I used a plug cutter to cut enough plugs to fill 24 holes around the rim of the bowl.

I then used a Forstner Drill in the Oneway Drill Wizard to drill the 24 equally spaced holes, the maximum indexing positions on my Nova DVR 3000. Actually, I glued in a plug each time I drilled a hole. The glue used was Tite-Bond 2, which is the glue that I use almost exclusively. I've never had a glue joint fail with this glue, which is a good reason to continue its use.



Drilling the 24 equally-spaced holes with the Oneway Drill Wizard and my 3/8" drive drill motor that had to be purchased to fit the collar of the Drill Wizard.

Once the glue was dry, I turned away the tops of the plugs, finish-sanded, and applied finish to the inside and outside of the bowl.

This information is provided by *More Woodturning Magazine*. Please visit their web site:
www.morewoodturningmagazine.com

Adding Decorations to a Bowl

By Fred Holder



A view of the bowl from the side after sanding and finishing.



A view of the top of the bowl while still mounted on the lathe.

The bowl was now ready to reverse and turn the foot. I would have normally reversed the bowl onto my vacuum plate made by Vicmarc that I've had for a number of years. However, the Rim Chuck was easier to set up and worked very well. Again, for safety sake, I used tailstock support; something that I do with any reverse turning method, whether it is a jam chuck, a vacuum chuck, a Longworth Chuck, or the Rim Chuck.

This information is provided by *More Woodturning Magazine*. Please visit their web site:
www.morewoodturningmagazine.com

Adding Decorations to a Bowl

By Fred Holder



Turning the foot of the bowl. The tailstock was removed for final turning away of the little tenon in the center and for final sanding.



I was pleased with the bowl and so was the person who purchased it.

If you haven't tried decorating one of your bowls, perhaps it is time that you gave it a try. This was a very simple method, but only one of many ways to enhance the appearance of a fairly plain piece of wood. Give it a try.

This information is provided by *More Woodturning Magazine*. Please visit their web site:
www.morewoodturningmagazine.com

Meeting Minutes - January 6, 2016

Meeting was called to order at 7:00 pm, gaveled by our new President John Whittier.



Greg Peck

Visitors/New Members:

Chris Eckhardt, and Larry Thomas with Jet 1220 lathe. **WELCOME!**

7:05 pm to 8:00 pm — Mike Suddor 3M Presentation on finishing, abrasive materials, techniques.

- Presentation: Mike gave two vendor sites for 3M supplies— <http://www.ottofrei.com/> and riogrande.com
Abrasives 101— Coated, bonded, non-woven, and loose types were described.
Materials of increasing hardness.....Al₂O₃, alumina, zirconia, ceramic, diamond, garnet.
Mike explained the various mesh scales used around the world. And showed 3M products:
775L (Cubitron II); 675L (9um to 1,200 ANSI); Trizact (amazing abrasive grain & life, 5x other types)
Mike gave the presentation to Paul Rygaard for entry into SVW Yahoo Group website.

8:00 pm to 8:15 pm — Break

8:15 pm to 8:35 pm — Staff Updates:

- Bob Gerenser: Requested that inputs into the group database, i.e. tables and lists like Presidents Challenge, Show and Tell, etc, for the Newsletter should be presentable, with brief descriptions and properly capitalized. First and last names begin with a capital letter and only the first word of a sentence is usually capitalized.
- Treasurer: Brief update by John is that the SVW club account is a few thousand dollars positive.
- Dennis Lillis' Wood Event: It is to be at Dennis' place by Skyline.
- Membership dues are due now: About 60% are paid.
- February **non-club-meeting demo**: February 20, Saturday, at Santa Clara High School woodshop. Demo will be by **Eric Lofstrum** from Oregon—skew, off center (\$20—entrance + lunch).
- Gordon Patnude: Library is getting lots of use. Give inputs to Gordon for artists and new titles.
- Jason Fery: The High School approved an Advanced Wood Course focused on lathes. The school will have 8 lathes, Henry Taylor tools for each lathe, roll-up carts and chucks for each lathe, and CBN wheels for sharpening. This is a great accomplishment for Jason and the club. Club members can go to the school at times to give demos and help Jason in class. **Congratulations!**
- John Whittier described the February President's Challenge—a BOWL. Imagine that. The February **club-meeting demo** is by **Jim Rodgers** demonstrating a new version of a box with threaded lid, and several chattering or decorating tools.

8:35 pm - 8:55 pm — January President's Challenge — A spindle work

- *See the Member and their work in the photo section of Newsletter.*

8:55 pm - 9:20 pm — Show and Tell

- *See the Member and their work in the photo section of Newsletter.*

9:20 pm - 9:30 pm —

- John mentioned the Home and Garden Show at Santa Clara Convention Center, this upcoming Friday, Saturday and Sunday. Seven turners from the club will present and sell their handiwork.
- Bob Gerenser explained how he finishes work in this kind of damp and cold weather. His "Tip" is on page 21.

9:30pm — Meeting adjourned

Tree of the Month

Taxus baccata English Yew

Contributed by Tony Wolcot

Yews are a favored tree by many folks, in particular English garden types as the yew is a staple as a dark green filler in Elizabethian gardens. For me it is a wonderful plant and a spectacular wood. There are drawbacks of course. Yews are shrub like so finding any size wood is difficult, and turning requires a close scrutiny of bark inclusions. Taxol is the oil derived from yews and is now being used to fight cancer. Having said that it is then not surprising that nearly all parts of the yew are considered toxic and poisonous to humans. It can cause eye, skin, and respiratory irritation, as well as nausea. I have worked some pieces of yew and not had any of these symptoms. Take this information with a grain of salt or perhaps a grain of wood.



Tree size is 30-50 feet tall, 1 to 2 feet trunk diameter. I must say that these sizes are hard to find here in California, but in older areas especially in Europe, some good size yews are possible, not common. If I ever found a yew big enough to mill, I would be ecstatic to have such a beautiful wood to do small woodwork projects. The heartwood is orangish brown, sometimes with a darker brown or purplish hue, darkening with age. Sapwood is always thin and a pale yellow. Yews grow slowly, so if you do come across one being cut down, realize how precious and old these yews are.

The grain of yew is straight, fine, uniform textured with a good natural luster. The wood is rot resistant, repels insect and borers. Easy to work but often you will find weaknesses winding through and the presence of knots can be problematic for some applications, but for wood turning this is an excellent wood.



There are some unusual usages for yew including archery bows, the preferred wood for longbows in medieval warfare for centuries. Yew is a good wood for carving, musical instruments (lutes) and of course turning. The wood is unusually strong but also flexible. Average dried weight – 44 lbs/ft³, Specific gravity (basic, 12% MC): .62 .71 Janka hardness: 1,600 lb f Shrinkage: radial:4.0 %, tangential: 5.4%, volumetric: 9.7%, TR ratio: 1.4

There are many yews, all are closely related. Yews in general have rich, dark green needles about one-inch long. These are dioecious plants with a male plant and a separate female plant. Only the female plant gets the scarlet red 'berry' in the fall. Yews are very tough tolerating both alkaline and acidic soils. The one thing yews do not tolerate is wet feet. The genus Taxus is a gymnosperm or conifer, so the 'berries' are actually female cones; and yews are erroneously called a 'softwood'.

(Continued on following page)

Taxus baccata English Yew continued

This is a very hard wood. You will commonly find yews planted as foundation shrubbery on both sides of a front door. They grow into good size trees and are commonly hacked down to keep them from looking like roof supports. Over time the multi stem trunks mold together and produce some interesting grain patterns although the bark inclusions can be troublesome.

Common names abound such as English Yew, Irish Yew, Scottish Yew; although these are all the same tree. The Japanese yew is different (*Taxus cuspidata*), this yew is shorter and wider lacking the bright color of the *T. baccata*. There is a cross between the two – *Taxus x media* which is hardier. *Taxus baccata* typically gets to 40 feet tall, densely branched; the species is native to Europe, northern Africa and western Asia. You will see yews everywhere. And since they are mis-planted next to houses they can be salvaged for the spectacular wood.

Eric Meir has a new book out called **Wood** . It lists hundreds of woods and uses identification through the endgrain. For *Taxus* spp the endgrain (under 10x magnification) shows an absence of resin canals, a gradual earlywood to latewood transition, moderate grain contrast, no odor. He mentions *Taxus brevifolia* (Pacific yew) but mentions that it is difficult to separate from *Taxus baccata*.



To properly identify yews in the field, grab the needles and squeeze. Yews are pleasant and soft to the touch. Other similar looking plants such as junipers, spruces, cypresses will bite back when you squeeze them. Also look for dark green dense needles and dense branching. There will be several trunks but at the base with a little luck you will find a single useful trunk. In the fall the female scarlet berry is an easy way to identify.



Sponsors



Shavings & Sawdust

Join this Group for Home & Garden or
Sawdust Session information.

Here are the details on Shavings:

Group home page: <http://groups.yahoo.com/group/Shavings>

Group email address: Shavings@yahoogroups.com



CRAFT SUPPLIES USA

THE WOODTURNERS CATALOG

woodturnerscatalog.com • 1-800-551-8876

WOODCRAFT®

Helping You Make Wood Work®

Eric McCrystal
Store Manager

Woodworking Tools • Books • Supplies • Lumber • Classes

SEANNA WOODWORKS, INC.

Phone: 650.631.9663

d/b/a WOODCRAFT

Fax: 650.631.9633

40 El Camino Real

woodcraft561@mac.com

San Carlos, CA 94070

http://stores.woodcraft.com/san_carlos



North Woods

Wood for woodworkers
and craftspeople

- Big Leaf Maple
- White Oak
- Black Walnut
- ... and more!

service@nwfiguredwoods.com

www.nwfiguredwoods.com (800) 556-3106

15% off online orders! use WOODTURNERS coupon code at checkout.



The Sanding Glove®

17252 Big Rd, Bloxom VA 23308

Toll Free 1 (800) 995-9328



1492 Soquel Ave

Santa Cruz, CA 95062

Chocolates Worth Their Calories™

BHE

INTERNATIONAL

ATHANASIOS B. EFFIOM
Owner

Distributors

Ebony, Bubinga, and Zebrawood

12772 Boulder Creek Road
Victorville, California 92392

760.243.6847

760.255.1009 cell

810-3299

info@bheintl.com
www.bheintl.com

Secured Storage for Autos, Boats and RVs

Pedron's Storage

Storage Location: 6150 San Ignacio Ave., San Jose, CA 95119

408-269-5200

Serving San Jose
For Over 40 Years!

www.pedronsrstorage.com

Office Hours:
Tues-Fri 10-5

Our outside storage facility has:

24 hour Cardkey Access • Monitored Electronic Surveillance
Competitive Rates • Month-To-Month Lease



est. 1954

Warehouses:

Perris, Salt Lake City
Berkeley, San Francisco
Dry Kilns, Edinburgh, IN
Corp. Office: San Francisco

MG GUTIERREZ
Manager

2211 Ringwood Ave., San Jose, CA 95131
(408) 526-9663 Fax (408) 526-9664 Cell: (408) 640-7811
E-mail: mg@macbeath.com www.macbeath.com

CLUB NOTES

SVW NEEDS YOU!

It takes more than the officers and program chairs to make our club function at its best. If your name's not in the column at right, we still need your help in other ways to manage some of the club's activities. This is a **HELP WANTED** ad, and we need you to respond. There are always things that need doing. In particular, we need:

- Volunteers for shop tours
 - Volunteers to present/demonstrate at meetings
 - Members to write up their profiles for the newsletter
 - Short articles or Tips & Tricks for the *Chips & Chatter* newsletter
- Please contact Mike Lanahan to volunteer and help make our activities happen.

2016 Silicon Valley Woodturners Officers, Staff, Volunteers, and Contacts

President	John Whittier	(408) 379-3722	turninghands@yahoo.com
V.P./Programs	Mike Lanahan	(408) 926-9330	Mikelan@aol.com
Treasurer	Tom Schmida	(831) 688-3866	r_westfall@msn.com
Secretary	Greg Peck	(408) 281-9156	gkeogh@sbcglobal.net
Newsletter Editor	Bob Gerenser	(408) 262-5411	bob.gerenser@sbcglobal.net
Hospitality	Barbara Jones	(408) 257-9385	northbaj@att.net
Membership Chair.	Paul Rygard	(408) 866-0390	prygard@yahoo.com
Photographer	Jim Gott	(408) 265-9501	jgtimp@aol.com
Property Mgmt.	Gary Keogh	(408) 281-9054	gkeogh@sbcglobal.net
Librarian	Gordon Patnude	(408) 267-6789	
Webmaster	Pete Zavela	((405)849-2858	zavelawoodturning@gmail.com
Site Prep	Johnny Alias	(408) 227-2423	vets9@ix.netcom.com
	Milton West	(408) 729-6334	miltwest@sbcglobal.net
Special Events			
Audio/Visual	Richard Scott	(408) 799-0005	rams1942@sbcglobal.net
	Greg Peck	(408) 281-9156	gkeogh@sbcglobal.net
Yahoo Groups Owner	Howard Cohen	(408)378-9456	howard687@yahoo.com

Sharing Knowledge

MEMBERS: Please contribute your expertise to our newsletter. The editor will help you get your article ready if need be. Deadline is one week after our club meeting.

OTHER WOODTURNING CLUBS: You may use materials in this newsletter for the benefit of other turners. Please credit Silicon Valley Woodturners and the newsletter month and year for any material you use, and mention our web site: www.svwoodturners.org. Note that if we've flagged an article as having been re-printed from another source with permission, you must secure that same permission in order to use that material.

Volunteer Instructors / Mentors

The turners below have graciously offered to open their shops to help members who want to learn to sharpen, try something new, or master a technique that just doesn't seem to be working. We all love to share. You just have to ask.

Willing to help? Contact Mike Lanahan to join this list.

Jim Benson (831) 475-5615

Jim Gott, jgtimp@aol.com, (408) 265-9501 sharpening, design, natural edge bowls, boxes, goblets, tool control, you name it. Anything but segmenting.

Mike Lanahan, lanahan.mike@gmail.com, (408) 926-9330 Pepper Mills, Segmented, and Shaving or Makeup Brushes.

Dennis Lillis, denjlillis@gmail.com, (408) 353-3821 Hollowing, sharpening, and coring

Ironmen are those who successfully complete all 12 President's Challenge projects for the year. Those who meet the challenge are awarded coveted and distinctive IRONMAN name badges. A blue bar in the accompanying chart means that person has completed the project for the month indicated. You needn't be a great turner, you just need to participate. Make something in our Challenge theme and

Editor's Note

If I've somehow overlooked your President's Challenge entry, send me an e-mail at bob.gerenser@sbcglobal.net

President's Challenge 2016	January Spindle	February Bowl	Lidded Turning	April: Goblet	May Top/Toy	June Natural Edge	July Plate/Platter	August Hollow Form	September Craft Item	October Artsy	November: Ornament	December Favorite	Picnic
Alias, Johnny													
Brown, David													
Gerenser, Bob													
Gott, Jim													
Green, Herb													
Havens, Brian													
Jones, Barb													
Keogh, Gary													
Lanahan, Mike													
Landon, Scott													
Lillis, Dennis													
Mackenzie, Colin													
Martinka, Joe													
Patnude, Gordon													
Plemons, Dave													
Peck, Greg													
Rygaard, Paul													
Schmida, Tom													
West, Milton													
Westfall, Dick													
Whittier, John													
Zavala, Pete													

For a more detailed description of the 2014 President's Challenges, go to:

<http://groups.yahoo.com/group/SVWoodturners/files/Forms/>

IRONMAN Rules

- There are twelve challenges listed for the year and in order to qualify for Ironman you must show, by the end of the year, that you have completed all twelve challenges.
- Challenge entries should be shown at the meeting corresponding to the challenge schedule.

Next Meeting...

Join us Wednesday, February 3rd@7:00PM

Santa Clara High School Woodshop

3000 Benton St, Santa Clara, CA

It is right across the street from the Baptist Church sign, and just past (coming from Kiely) a No Entrance sign.

January Program: Jim Rodgers

January Challenge: Bowl

Dinner before the Meeting:

Watch for email update



Join Silicon Valley Woodturners

Want to join a great group of turning enthusiasts in an atmosphere of sharing and camaraderie? Become a member of Silicon Valley Woodturners. We meet on the **First** Wednesday of each month. See page 2 for details. Drop in at any meeting and check things out. To join, contact John Whittier (see contact list), or just complete the application form below and mail with check to Grant. Learn more about our club on the web at www.svwoodturners.org.

Silicon Valley Woodturners Membership Application

Please print and mail with a check payable to SVW for \$35* individual (\$45* family) to:
Paul Rygard, 255 Prince St. Los Gatos, CA 95032

Name _____

Address _____

City _____ **State** _____ **Zip** _____

Phone(s): home: _____ mobile: _____

Email _____ **Website** _____

Lathe(s): _____

Current Member of AAW? Yes ☐ No ☐

Member-ship*	Renewal	2 nd Quarter April - June	3 rd Quar-ter July - Sept.	4 th Quar-ter Oct. - Dec.
Individual	\$35	\$25	\$20	\$10
Family	\$45	\$35	\$30	\$15



Tips & Tricks

Drying, or more properly, curing, finishes during cool damp weather can be problematical.

Most common finishes aimed at the hobby or non-professional user seem to be formulated to work best above 55 deg. Fahrenheit. This also assumes that the relative humidity will be in the neighborhood of 50%. These conditions are not likely to exist in an unheated garage or detached work shop during this time of year.

My solution was to construct a simple curing chamber using a heavy cardboard box I had saved for the purpose. On the one hand it would be nice to have a box with a lift-off lid, but having a single piece box allows me to fold it back flat when I'm done. I used a hole saw to cut a 2 1/2 inch diameter hole in one side of the box that didn't have hand holes. The hole was sized to accommodate the fan I use to circulate the air. I read in the instructions for using Waterlox that having air circulate is critical to the curing process as it provides fresh Oxygen to the surface of the finish. While they were giving directions for finishing a floor, it seems like sound advice in any case, hence the fan. The fan is a 12 VDC unit I salvaged from an expired computer and 12VDC power supplies, laptop bricks, are cheap and easy to come by. The fan and power supply can be found at Weird Stuff or Excess Solutions, for example.

I used the same hole saw to cut the opening in the piece of 1/8 inch plywood I mounted the fan to. This

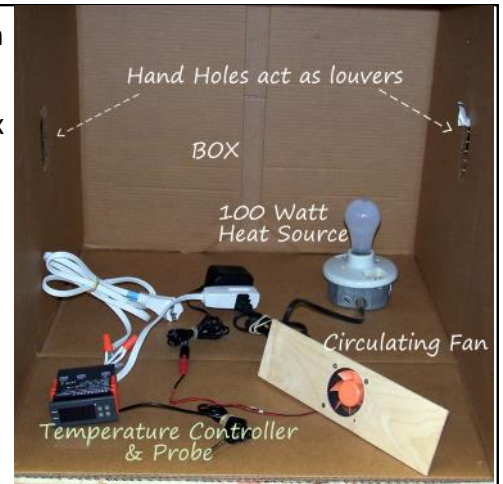
assembly is then just taped in place on the box with packing tape. Remember, this all comes apart later.

I use a 100 watt light bulb, the ol' fashioned

kind, as a heat source. Originally, I just plugged in the light bulb and fan and closed up the box and monitored the temperature. I used the hand holes in the box as louvers to adjust the airflow. This worked OK, the temperature would get to about 85 Deg. and I would unplug things for a bit, let the box cool some, then repeat.

But, then again, there is Ebay, and for less than \$12.00, with free shipping, I bought a Temperature Controller to automatically unplug things and plug them back in. Once I mastered the instructions for the controller, hooking it up was easy-peasy and it works like a champ.

Bob Gerenser



FOR SALE



Smocks, SVW colors. \$30 (SVW patch not included). Contact John Whittier for details. (408) 379-3722, turnturninghands@yahoo.com

Bandsaw Cutting Round Disk Sets, numbered, with center holes— These sets of 1/4" thick MDF disks increment by 1 inch from 4" to either 12" or 20", depending on the set. 4"-12" set (shown), \$14, or the 4"-20" set, \$20. Contact John Whittier for details. (408) 379-3722,

turnturninghands@yahoo.com

