



CHIPS & Chatter



www.svwoodturners.org

THE SILICON VALLEY WOODTURNERS' NEWSLETTER

Log On / From a Log

By Bob Gerenser

**September meeting
will be at:**

**Santa Clara High
School Woodshop,
3000 Benton St,
Santa Clara, CA.**

Click link for map:

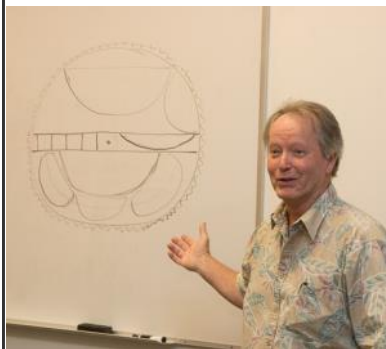
[https://www.google.com/
maps/@37.3445271,-
121.9824575,16z?hl=en](https://www.google.com/maps/@37.3445271,-121.9824575,16z?hl=en)

Phil Roybal led off this month's meeting, held at the San Jose Techshop, giving a presentation on navigating Yahoo Groups (YG). There have been numerous iteration and "upgrades" to YG since the club first embraced the format a decade ago as a means of mass communication within the club. While the latest installment of YG benefitted us with expanded memory capacity, not all changes have enhanced the platforms performance from the club's standpoint.

Phil gave an excellent presentation detailing the options available and highlighting the path to follow when accessing the SVWoodturners group.



Later in the evening Dennis Lillis walked us through the process of getting the pieces we want out of a log, rather than just randomly cutting the timber into manageable chunks. By drawing on a white-board and chalking on a log section he brought for the purpose,



Dennis showed the optimum section to use depending on the final form desired.

Along with sketches, Dennis brought examples of the types of turned pieces he was describing and offered them into position as a further visual aide.



Dennis also brought some pieces that exemplified the fact that even if you do everything "right", there's no guarantee things are going to work out as anticipated. Wood just will do what it wants.



In This Issue	Page
Phil Roybal	1
Dennis Lillis	1
Mike's Message	2
Club Picnic	3
Symposia	3
President's Challenge	4-6
Show & Tell	7,8
Tips & Tricks	9
Special Event!	10
Meeting Minutes	11
Colin's Corner	12
Bay Area Trees	13
Club Notes	15
Ironman 2014	16
Next Meeting	17
For Sale	18

Mike's Message

Hopefully at our August meeting Phil Roybal answered all those nagging Yahoo Groups questions you may have had. If not, he or Howard Cohen are both still available as resources. There was also an enjoyable variety of complimentary items turned. Dennis Lillis anchored the night, discussing how to process a log for turning blanks. Having our meetings at the TechShop has been a real lifesaver, with the loss of the Johnson Turning Center.

Many moons ago John Whittier started developing a relationship with the Santa Clara High School wood shop teacher. No, not that kind of relationship. John started talking to him about teaching woodturning to the high school students in their new wood shop, and discussed the possibility of SVW working with them in exchange for holding our meetings and demo there. John provided a set of turning tools and a low speed grinder, promised gifts of wood, and the relationship blossomed from there. Romantic, huh? There were meetings with the Principal, who sold the idea to the School Board. Fast forward to the present, and SVW will hold our next meeting at the High School. In return we will provide turnings for them to auction off, the students will become junior members of SVW and may attend our meetings and have access to our woodturning DVD library, some members may help demo or teach woodturning in the shop (let me or John know if you are interested). We will also apply for an AAW Educational Opportunity Grant (EOG) on behalf of the school. The AAW also provides Journals for Turners and Learners, and will provide a case of American Woodturner back issues, and the students can become AAW members for a year with electronic access to the journals. The facility is quite nice, and we look forward to our first meeting and continuing to develop a mutually beneficial partnership.

The picnic is less than a month away, Sept. 13, and therefore so is the president's picnic challenge, not counted toward the Ironman status, but with a cash prize! The Flying Disk (or ring) that flies and lands the closest to a set target at 50-100 feet away gets \$100. The disk must be tossed or thrown by hand, with no mechanical aids. No skeet/clay pigeon

throwers/launchers, catapults or trebuchets. Note: A **flying disc** is a disc-shaped gliding object, used recreationally for throwing and catching, for example, in flying disc games. The shape of the disc, an airfoil in cross-section, allows it to fly by generating lift as it moves through the air while spinning. The term **Frisbee**, often used to generically describe all flying discs, is a registered trademark of the Wham-O toy company.

Pete Zavala is taking the Web Master reigns from Rich Johnson. Pete will be meeting with Rich to get the keys to the car. Thanks, Pete!

Bob Gerenser and I made the trek to Sacramento to see a Nor-Cal Woodturners hosted demonstration by Brad Adams, a BAWA member. Brad is a full time woodturner, as a profession. Brad promised to show tricks and techniques that other demonstrators don't cover, and he delivered on that promise. He had some great sanding techniques (a step that is mostly skipped by demonstrators), using cabinet scrapers on the outside and inside of a bowl, a trick for seeing discontinuities in the form, and many more. He also shared tips on sales and marketing your work. Perhaps we can get him in a future SVW demo.

Mike Mahoney will hold a demo with West Bay Woodturners, November 8, and SVW will co-host the event. With the clubs subsidizing the event, entrance fees for club members are only \$10 to see Mike. The specifics of his demo are not announced, but my guess is there will be bowls, coring and thread chasing, and a box or hollow form. In any event, Mike puts on quite a show, and it will be fun to watch.

Keep making shavings,

Mike



CLUB PICNIC!!

The annual PICNIC will be held at Kelley Park-Redwood Grove site on September 13th, a Saturday, from 10:00 AM 'till 6:00 PM . Kelley Park is located at 1300 Senter Road, San Jose, at Story Road (see map: <https://www.google.com/maps/place/Kelley+Park/@37.3205134,-121.8589505,16z/data=!4m2!3m1!1s0x0:0x372b0b18c1401805>)

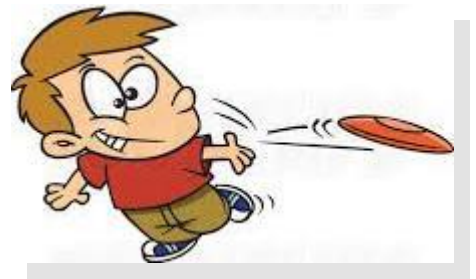


Bring your best or favorite turnings to show in one or more of the following categories:

- ☐ Natural Edge Bowl
- ☐ Cut Edge Bowl
- ☐ Spindle Work
- ☐ Hollow Form
- ☐ Craft or Specialty Item
- ☐ Segmented

All entries are voted on by your peers and you may take home a ribbon for your efforts.

The President's Picnic Challenge is The Flying Disc Competition!
See Mike's Message for details!!



Moving right along to another perennial favorite at the picnic: FOOD! The club will provide the grilled meat and one soft drink or water. The rest of the meal is potluck, and a data base will set up in Yahoo Groups to sign-up indicating what your contribution will be.

In order for our Grill Master to be able to plan and order the meat, please indicate on the sign-up sheet how many in your group will be attending (spouses and responsible children are welcome), even if you don't know yet what you will be bringing to the pot-luck.

Symposia Across the USA

- SWATurners Symposium, Waco, TX August 22-24, 2014
- Ornamental Turners International Symposium, Columbus OH - September 2014
- 15th Rocky Mountain Woodturning Symposium, Loveland, CO September 12-14, 2014
- Turning Southern Style XX Symposium, GAW September 19-21, 2014
- Segmented Woodturners Symposium, San Antonio, TX October 16-19, 2014
- 6th Annual Wisconsin Woodturners Expo, Eau Claire, WI October, 2014

President's Challenge "Complimentary Pieces"



Mike Lanahan , Black & White Ebony Shaving and Makeup brushes, finished w Watco Butcher Block oil & finish.



Jim Gott , Bookmatched bowls from a walnut crotch, finished with 3 coats wipe-on poly.



Marcus Moody ,
Silver Maple
Bowls



Gary Keogh , Two sets of reverse image bowls. Finish: Lg. bowls Waterlox Sm. bowls 50/50



Gordon Patnude , Their Royal Majesties, the King and Queen



Turning Out continued

Tom Schmida , trylon
and perisphere, juniper,
EEE finish+wax



Dick Westfall , Goblet
and Coaster, Walnut,
Poly
Goblet with epoxy and
paint powder, Poly,
July makeup



Keith Towe , Ceremonial
Bowl, Grass Tree
(Xanthorrhoea australis)
Root with Hand Forged
Iron Stems



Rich Johnson , Mortar &
Pestle Cocobolo & Ebony
no finish buffed



Pete Zavala , Bowl and
Coaster, Punky Oak.
Mylands Friction
Polish.

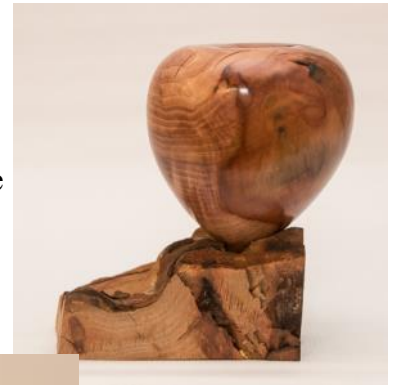


Turning Out continued

Bob Gerenser , Four
Forms from a Sycamore
Branch



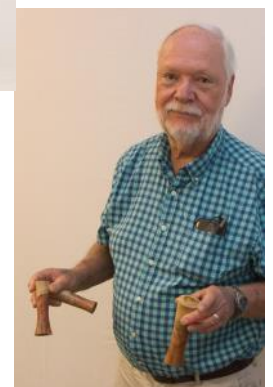
Dennis Lillis , Madrone
Burl Hollowform on
Base



Chris Drysdale , 3 part Sugar Caddy,
Australian Blackwood finished with
Livos oil.



Herb Green , 3 similar
carib candle holders



Show & Tell



Tom Schmida , evergreen pear bowl, walnut oil finish



Bob Gerenser , Four Projects from a Mahoney Workshop



Herb Green , small carib hollow form



Scott Landon , Square Bowl/ Maple



Gordon Patnude , a potential "turkey" rescued





Jim Gott , Myrtle Burl Bowl, 3 Coats Wipe-on Poly



Mike Lanahan , Keltic knot rolling pin, with Watco Butcher Block oil & finish.



Gary Keogh , Soon to be finished Eucalyptus Hollow Form/ Waterlox



Dennis Lillis , Bristlecone Pine and Cherry Plum Ornament



Rich Johnson , Needed a lemon to clean Walnut stains off his hands, found this on his tree.

Band Saw Tire Installation Jig

I just installed urethane tires on my Delta band saw, and I couldn't believe how EASY it was! You're scratching your head, right? Easy? It's not easy to stretch that tire over the wheel. It's frustrating, right? It takes at least two people, right? You need to soak the tires in hot water first, right? WRONG! It's SUPER EASY, once you watch a YouTube video that I found. This guy made

a jig out of a short length of 2X4, a couple of short lengths of 1/2" dowel, and some 1/2" PVC pipe. This ingenious jig that is simple to make lets you install a band saw tire in less than a minute, and it evens out the stretch tension, too. It works on any size wheel, and is elegantly simple. Check out the link below and see just how easy it is to change a band saw tire!

<https://www.youtube.com/watch?v=j4etjdqmwz8>

--Jim Gott



VEGETABLE OIL FOR LUBRICATING CHAIN SAWS

by Skip Garrett, Mechanical Engineer

Introduction

To work properly, chainsaw chains and bars must be lubricated. In the past, most operators have used petroleum-based oils. When a chain saw is used, virtually all of the lubricant ends up in the environment. Every year thousands of gallons of chain-and-bar oil are carried into the forests and none returns.

The demand for environmentally acceptable products is growing rapidly. There is increased concern about the influence of petroleum-based oils on the environment. Also, exposure to petroleum-based oils can have adverse health effects on users. One potential alternative is the use of "environmentally compatible" or "environmentally friendly" oils that are produced from vegetables. To achieve this classification, an oil must be nontoxic and must biodegrade rapidly if spilled. Rapeseed-based (usually called canola) oil is currently the most common environmentally compatible chain-and-bar lubricant.



Figure 1—Chainsaw chains and bars must be lubricated.
Virtually all of the lubricant ends up in the environment.

For the full text, go to : <http://www.fs.fed.us/eng/pubs/html/98511316/98511316.html>

Special Event



West Bay Woodturners



Mike Mahoney Production Woodturner

**Saturday, November 8, 2014
9:00 am to 4 PM**

Bridges Community Church
625 Magdalena Ave, Los Altos

Admission has been discounted
to \$10

(Sponsored by WBAW and
SVW)

All Students are Free!



The West Bay Woodturners and Silicon Valley Woodturners are pleased to announce a demonstration by professional wood turner Mike Mahoney in Los Altos. Mike will provide an all-day demonstration at the Bridges Church in Los Altos. The doors will open at 9:00 am. The general public is invited to attend. The admission fee for this demonstration has been deeply discounted and is being sponsored by the two clubs. Mark your calendars and don't miss this rare event.

Mike plans on covering many of topics and should have something for everyone and if time allows, will include:

Bowl coring with the McNaughton Center saver

Big green Calabash

Rough turning and storing wood to season

Hollow Form with threaded lid/ hand chased threading

Heirloom Peppermill

Making Family Heirlooms (wood selection, design, and finishing) Things that will last a lifetime

Finishes

Platter

For more information on this demonstration, contact Bob Bley, WBAW Program Officer, by email at rbley@dschnur.com, or by phone at 650-854-4939

Meeting Minutes

SVW Meeting Minutes 8/6/14

By Gary Keogh

The meeting was called to order by Mike Lanahan at 7:00 pm.

Visitors and New Members;

There were no visitors or new members.

The First Part of the Program:

We moved right into Phil Royble's Presentation regarding the "SVW Woodturners Yahoo Group" site walk through and then a Q & A session.

After that we had a 10 minute break at 7:35

After the break Mike talked of the new venue at Santa Clara High School, located at 3000 Benton St. Santa Clara, 95051. We will have our Sept 3 meeting at the school. Some paper work has yet to be completed but appears to be just a formality.

The Second Part Of The Program:

Rich Johnson announced that he and Michelle would like to put on a going away get together at their place on the 23 or 24th of Aug. Later info was presented that it would be on Sat. the 23rd.

A sign up page will be created on the Yahoo Group site.

Staff Reports:

Dennis Lillis – Upcoming Programs:

Picnic – Venue will be Kelly Park in the Redwood area and start at 1:00 pm and continue until 6:00 or before depending on the participants.

The challenge for the picnic will be to turn a flying disk. To qualify the disk must fly a distance of at least 50 feet (I suspect maybe just be the one that flew the longest distance).

The President's Challenge:

The President's Challenge was held and then the raffle. The winners of the raffle were Marcus Moody – Wood, Gordon Patnude – Gift Certificate and Jim Gott received the micro mesh sanding disks.

Show and Tell:

Dennis Lillis gave a nice presentation on "Going From Log To Bowl". Dennis had many examples of what he was talking about. I learned some things during the talk and I think a number of others did as well.

The Meeting was adjourned at 8:30.

Gary Keogh

DVD Lending Library Rules

There is no charge to check out one or two of our many DVD's for one month.

If you do not return the DVD(s) at the next meeting, you will be charged \$5.00 (per month)
per DVD not returned

QUESTION:

Why do round cross-section shoelaces untie more easily than those with an oblong cross section.

This was a question that was recently posed to the experts. From my experience of attending our club just about everyone is an expert.

So I wonder what our experts would say about this question?

As I remember it being able to tie shoelaces properly is one the most important landmarks of growing up and one of the first really difficult tasks we meet in early childhood. Many of the other ones like our first steps and riding a two-wheeled bicycle seem to come by instinct but any parent who has struggled to teach an infant this landmark of infant-hood knows that this is often a frustrating experience.

I decided to investigate the question and probably many of you like me probably came up with the obvious answer.

If you rub two wooden rods of circular cross section together, there is very little friction because the point of contact between the rods is small. Compare this with rubbing two flat, wooden slats against each other. There is much more friction because there is a much greater contact area. The same principle applies to shoelaces. Added to this, flat laces have an extra degree of freedom in that they can warp across their width, in effect wrapping around other bits of shoelace and increasing friction even more.

Seems obvious when you look at it this way. But wait a moment! Woodturners, however, know that the obvious is often not the answer. A little investigation on the internet reveals that though there may be a marginal effect of friction the real answer is that many of us have forgotten that early childhood first lesson and no longer tie our shoe laces correctly. So as a reminder consider the following.

The standard shoelace knot can be described as a doubly slipped reef knot. It comprises a reef knot in which both loose ends are fed back on themselves to

create a method of rapidly undoing the knot. The crucial point in tying a reef knot is that the two overhand knots of which it is made are of opposite handedness – left over right, then right over left. If the handedness of each overhand knot is the same, then one ends up with a similarly doubly slipped granny knot.



Such knots have a tendency to come undone more easily than a correctly tied shoelace knot. The way to tell if you're tying a granny knot or a correct shoelace knot is to see how the laces and the loops lie. With a shoelace knot, they will naturally lie across both sides of the shoe.

With a granny knot they will lie perpendicular to the tied lace, pointing up your leg and to your toes. If you have a granny habit, the easiest way of correcting this is to simply reverse the handedness of the initial twist of your laces.

The tying of one's shoelaces is discussed in wonderful detail on [Ian's Shoelace Site](#), along with helpful pictures (at bit.ly/TheGrannyKnot). My ongoing straw poll would suggest that about half of people tie their shoes with a granny knot and that problems of them coming undone – be the cross section round or flat – invariably disappear once they start tying them correctly.

So! You experts follow the above advice and never have to deal with your shoe laces coming undone ever again whether they have a circular cross-section or not.

So if you have taken the time to come to my corner and read my epistle and now look down at your shoes and discover that you are using Velcro to secure your shoes you will find that this has been a complete waste of your time, which is something some of your friends remind you when you tell them that you spend hours and hours "turning" wooden bowls and "stuff."

Trees of the Bay Area #6 *Liriodendron tulipifera* tulip tree and #7 *Araucaria heterophylla* Norfolk Island Araucaria

By John Doyen and Tony Wolcott

I thought we would deal with two trees that have two aspects in common. Both trees are miss-named in common vernacular, and both trees are easily identified by a singular striking characteristic. Oh, one thing else both of these trees are highly desired, or the wood is, by turners as they are wonderful woods to turn with outstanding results.

The *Liriodendron* has a few common names, some that include the moniker 'poplar'. This is a high disservice to *Liriodendron* as poplar is a wood with little use except as the flooring for horse stalls. *Liriodendron tulipifera* is in the magnolia family with a rich greenish color, hard and solid. This tree does have a tulip like flower that is difficult to view high up in the canopy but quite exquisite with greenish yellow petals and a bright orange color at the base. Tulip trees grow to 200 feet tall, and are the tallest deciduous trees in the world.



The leaf of the tulip tree is the telltale sign for identification. A good solid green color and looks from a distance like a maple leaf. Closer inspection reveals a maple leaf with the top truncated, or cut off as if the tree forgot to grow a leaf tip. No other leaf comes close to this leaf appearance. Once examined you will always be able to recognize this tree. In the winter look at the leaves on the ground. It can be quite a large tree, related to magnolia, so if one unfortunately comes down, many bowls and other usages can be applied to a single tree.



Leaves are alternate, simple, 4-6 inches long and 4-8 inches wide. Composite seed fruits are cone like samaras, reddish brown. Bark is dark green, smooth, becoming grey-brown and furrowed with age. The wood is dark green brownish tinge. I have tried only a few spindle pieces which turned easily and finished clean with a good luster. Many references occur to *Liriodendron tulipifera* in the turning books.



Araucaria heterophylla is a very commonly planted tree in North America. Although called Norfolk Island Pine, it is not a pine at all and should be viewed with its close relatives *Araucaria bidwillii* – bunya bunya, *A. columnaris* – Cook pine (not a pine), *A. araucana* – monkey puzzle tree. The Norfolk Araucaria is identified by its symmetrical form, branches in whorls of 4-9 branches, very star like and quite distinctive layering. Needles are tight, 1/4" to 1/2" long, soft to the touch. A picture says a thousand words, and once shown this Araucaria is unmistakable. Grows to a 100 feet or more, usually straight as an arrow. The silhouette of the tree is a perfect triangle. Bark becomes whitish with horizontal lines of black specks. This is a handsome tree in a park setting.

For a 'soft wood' this tree is highly prized for turning especially utilizing the circular arrangement of branches. John Doyen describes how green wood can be placed in a plastic bag, allowed to fester for a couple of months until blue stain spalling appears. Finished bowls turned thin are almost emerald and translucent; some prized pieces have been shown locally. This is a very sought after wood for turning, not so much for milling. Huge trees are occasionally removed especially when planted in a small yard.

-Tony Wolcott

Sponsors



Shavings & Sawdust

Join this Group for Home & Garden or Sawdust Session information.

Here are the details on Shavings:

Group home page: <http://groups.yahoo.com/group/Shavings>

Group email address: Shavings@yahoogroups.com



Even Roy wants to know...

How did you do that?

Rich Johnson's

Woodturners' Boot Camp

Learn the basics, from chainsaw to polish. An all day class. Book available. Sign up now.
(408) 254-8485.




Eric McCrystal
Store Manager

Woodworking Tools • Books • Supplies • Lumber • Classes

SEANNA WOODWORKS, INC.
d/b/a WOODCRAFT
40 El Camino Real
San Carlos, CA 94070

Phone: 650.631.9663
Fax: 650.631.9633
woodcraft561@mac.com
http://stores.woodcraft.com/san_carlos



North Woods
Wood for woodworkers and craftspeople

- Big Leaf Maple
- White Oak
- Black Walnut
- ... and more!

service@nwfiguredwoods.com
www.nwfiguredwoods.com (800) 556-3106

15% off online orders! use WOODTURNERS coupon code at checkout.



The Sanding Glove®

17252 Big Rd, Bloxom VA 23308

Toll Free 1 (800) 995-9328

Secured Storage for Autos, Boats and RVs

Pedron's Storage

Storage Location: 6150 San Ignacio Ave., San Jose, CA 95119

408-269-5200

Serving San Jose
For Over 40 Years!

www.pedronsvstorage.com

Office Hours:
Tues-Fri 10-5

Our outside storage facility has:

24 hour Cardkey Access • Monitored Electronic Surveillance
Competitive Rates • Month-To-Month Lease



1492 Soquel Ave
Santa Cruz, CA 95062
831-425-1492
www.mackenziechocolates.com

Chocolates Worth Their Calories™



est. 1954

Warehouses:

Perris, Salt Lake City
Berkeley, San Francisco
Dry Kilns, Edinburgh, IN
Corp. Office: San Francisco

MG GUTIERREZ
Manager

2211 Ringwood Ave., San Jose, CA 95131
(408) 526-9663 Fax (408) 526-9664 Cell: (408) 640-7811
E-mail: mg@macbeath.com www.macbeath.com

CLUB NOTES

SVW Needs YOU

2014 Silicon Valley Woodturners Officers, Staff, Volunteers, and Contacts

It takes more than the officers and program chairs to make our club function at its best. If your name's not in the column at right, we still need your help in other ways to manage some of the club's activities.

This is a **HELP WANTED** ad, and we need you to respond. There are always things that need doing. In particular, we need:

- Volunteers for shop tours
- Volunteers to present/demonstrate at meetings
- Members to write up their profiles for the newsletter
- Short articles or Tips & Tricks for the *Chips & Chatter* newsletter

Please contact Bob Gerenser to volunteer and help make our activities happen.

President	Mike Lanahan	(408) 926-9330	Mikelan@aol.com
V.P./Programs	Dennis Lillis	(408) 309-8060	denlillis@verizon.net
Treasurer	Dick Westfall	(831) 688-2687	r_westfall@msn.com
Secretary	Gary Keogh	(408) 281-9054	gkeogh@sbcglobal.net
Newsletter Editor	Bob Gerenser	(408) 262-5411	bob.gerenser@sbcglobal.net
Hospitality	Thelma Mackenzie Colin Mackenzie	(831) 425-1514 (831) 425-1514	tm@jknvl.com colin@mackenzieschocolates.com
Photographer	Jim Gott	(408) 265-9501	jgtimp@aol.com
Property Mgmt.	Gary Keogh	(408) 281-9054	gkeogh@sbcglobal.net
Librarian	Gordon Patnude	(408) 267-6789	gppatnude@comcast.net
Webmaster	Pete Zavela	((405)849-2858	zavelawoodturning@gmail.com
Site Prep	Johnny Alias Milton West	(408) 227-2423 (408) 729-6334	vet59@ix.netcom.com miltwest@sbcglobal.net
Membership	John Whittier	(408) 379-3722	turninghands@yahoo.com
Audio/Visual	Richard Scott	(408) 799-0005	rams1942@sbcglobal.net
Yahoo Groups Owner	Howard Cohen	(408)378-9456	howard687@yahoo.com

Sharing Knowledge

MEMBERS: Please contribute your expertise to our newsletter. The editor will help you get your article ready if need be. Deadline is one week after our club meeting.

OTHER WOODTURNING CLUBS: You may use materials in this newsletter for the benefit of other turners. Please credit Silicon Valley Woodturners and the newsletter month and year for any material you use, and mention our web site: www.svwoodturners.org. Note that if we've flagged an article as having been reprinted from another source with permission, you must secure that same permission in order to use that material.

Volunteer Instructors / Mentors

The turners below have graciously offered to open their shops to help members who want to learn to sharpen, try something new, or master a technique that just doesn't seem to be working. We all love to share. You just have to ask. Willing to help? Contact Mike Lanahan to join this list.

- Jim Benson (831) 475-5615
- Jim Gott (408) 265-9501 sharpening, design, natural edge bowls, boxes, goblets, tool control, you name it. Anything but segmenting.
- Rich Johnson (408) 254-8485 all type to turning support available from beginner to Professional.
- Mike Lanahan (408) 926-9330 Pepper Mills, Segmented, and Shaving or Makeup Brushes.

Ironmen are those who successfully complete all 12 President's Challenge projects for the year. Those who meet the challenge are awarded coveted and distinctive IRONMAN name badges. A blue bar in the accompanying chart means that person has completed the project for the month indicated. You needn't be a great turner, you just need to participate. Make something in our Challenge theme and bring it to the next meeting.

Editor's Note

If I've somehow overlooked your President's Challenge entry, send me an e-mail at bob.gerenser@sbcglobal.net

President's Challenge 2014	January Mushroom	February Alternate Chucking	March Square Bowl	April Sphere	May Collaborative/Teach*	June Not Wood	July Inlay	August Complimentary Pieces	September Helix, Spiral or Threaded	October Different Model Lathe	November Lidded Box	December For The Shop	Picnic Flying Disc
Alias, Johnny													
Benson, Jim													
Drysdale, Chris													
Gerenser, Bob													
Gott, Jim													
Green, Herb													
Johnson, Rich													
Jones, Barb													
Keogh, Gary													
Lanahan, Mike													
Landon, Scott													
Lillis, Dennis													
Mackenzie, Colin													
Moody, Marcus													
Patnude, Gordon													
Peck, Greg													
Ryan, Doug													
Sayed, Ayman													
Schmida, Tom													
Studley, Raf													
Towe, Keith													
West, Milton													
Westfall, Dick													
Wittrock, Oscar													
Whittier, John													
Zavala, Pete													

For a more detailed description of the 2014 President's Challenges, go to:
<http://groups.yahoo.com/group/SVWoodturners/files/Forms/>

IRONMAN Rules

- There are twelve challenges listed for the year and in order to qualify for Ironman you must show, by the end of the year, that you have completed all twelve challenges.
- Challenge entries should be shown at the meeting corresponding to the challenge schedule.
- Entries may only be shown for one challenge.

Next Meeting...

Join us Wednesday, September 3rd.
at 7:00 P.M., at :

Santa Clara High School Woodshop
3000 Benton St, Santa Clara, CA

It is right across the street from the
Baptist Church sign, and just past
(coming from Kiely) a No Entrance
sign.

September Program: Jed Eskelson,
Mirka Representative Presentation

September President's Challenge:
Helix, Spiral or Threaded



Join Silicon Valley Woodturners

Want to join a great group of turning enthusiasts in an atmosphere of sharing and camaraderie? Become a member of Silicon Valley Woodturners. We meet on the **First** Wednesday of each month. See page 2 for details. Drop in at any meeting and check things out. To join, contact John Whittier (see contact list), or just complete the application form below and mail with check to Grant. Learn more about our club on the web at www.svwoodturners.org.

Silicon Valley Woodturners Membership Application

Please print and mail with a check payable to SVW for \$35* individual (\$45* family) to:
John Whittier, 961 W. Latimer Ave, Campbell CA 95008

Name _____

Address _____

City _____ State _____ Zip _____

Phone(s): home: _____ mobile: _____

Email _____ Website _____

Lathe(s): _____

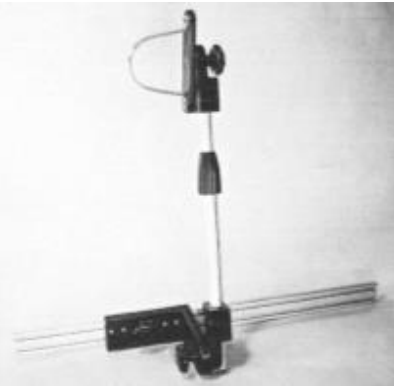
Current Member of AAW? Yes ☐ No ☐

Membership*	Renewal	2 nd Quarter April - June	3 rd Quarter July - Sept.	4 th Quarter Oct. - Dec.
Individual	\$35	\$25	\$20	\$10
Family	\$45	\$35	\$30	\$15



FOR SALE

Heartwood Concepts Dust Collec-tor. This is the dust col-lector system Bob Bley showed in November, and is available from Rich Johnson. \$160
Rich@latheart.com



Smocks, SVW colors. \$30 (SVW patch not included). Contact John Whittier for details.
(408) 379-3722,
tuinghands@yahoo.com



Bandsaw Cutting Round Disk Sets, numbered, with center holes— Select a disk size appropriate to the size blank you want to bandsaw from a log, and secure it to the log through the center hole to the log with a wood screw, and cut outside the disk with the saw for an optimally sized and shaped turning blank. These sets of 1/4" thick MDF disks increment by 1 inch from 4" to either 12" or 20", depending on the set. 4"-12" set (shown), \$14, or the 4"-20" set, \$20. Contact John Whittier for details. (408) 379-3722,
turnturninghands@yahoo.com



I acquired this lathe and restored it.
After working with it I found that the mandrel has a wobble.
I have since purchased a mini lathe and am mucking about making shavings.
I want to donate the old lathe, less motor, to some enthusiast. It is now sitting outside getting rusty.
If whomever wants it also want the new motor, the live center set and morse taper #1 to #2 adapter, I will charge them \$125.
I am off Hwy 85 and Union Ave.
Thanks.
Clayton Nelson

