



CHIPS & Chatter

THE SILICON VALLEY WOODTURNERS' NEWSLETTER

Rich Johnson holds on tight!

Rich Johnson talks about vacuum chucking using PVC pipe and a special faceplate.



SVW President Rich Johnson took the February meeting to talk about work holding; using vacuum chucks, drive centers, screws, face plates, and assorted mechanical contrivances.

Rich began with a drive center and dead center. He says the 4-prong centers which come with most lathes don't work as well as two-prong centers that bite and hold better, and allow reposition-



Live and drive centers.

ing work to take advantage of grain.

Rich's collection includes a Stebb center, who's spring loaded point eliminates the jarring of a catch. He also takes the approach recommended by Escoulon, who uses a matched drive center and live center without teeth so pieces can be reversed in the lathe without offset vibration.

Rich uses a Nova tailstock center with interchangeable points for different applications. He showed crutch tip drive and live centers for turning spheres, such as croquet balls. Rich uses the two-prong center and the Stebb as his spindle turning holders. The rest are "toys".

Next, screw chucks. Just drill a hole, screw it in, and start turning. Many chucks come with a screw, but Rich doesn't like using screws with chucks. He prefers a screw mounted in a faceplate, providing a more solid drive.

Rich has an eccentric screw that can be moved away from the lathe axis for off center turnings. It's held in an expanding jaw chuck. The tool has no reference points, so it's hard to return to a previous



Screw chucks.

[Go to pg. 5](#)

PRES SEZ



I have contacted the other area clubs and informed them of our intention to host this years "Turn Off" picnic on Sept. 18, 2004. So far everyone thinks the Croquet Match/Tournament is a Great Idea! I am still waiting to hear back from Nor Cal. I will try to attend their meeting and see how

it is going with them.

I have told the clubs that we just want to have a get-together, do some eating and have some FUN!

SVW will host a Croquet Tournament. To enter the tournament, the participating club must provide a club "turned" Croquet Set, and a team to play. Each playing member must wear some form of their own Club Colors to play in the Tournament. The winning team will get to

take home the famous "Turn off Trophy".

We will post the location of this event as soon as we can find a place suitable. As far as rules for the event... what's needed??

Each club can take care of their own food, bring it to the event and share with everyone. Croquet information is available on the web with the USA Croquet Association. More on that will follow.

So where can we get some help to pull this off? Next meeting, we had better assign some tasks Hint, hint! Mark Rand from WBAY has already volunteered his generator if we need power. "Power?" you ask. How about the Egg cup race?? That means wood and a lathe. We will need a flier to send out.... soon. Some trophy possibilities for the best "Croquet Ball" or best "Croquet Mallet" or... any other ideas? We will also need to have an instant gallery for everyone and I know there are more things, but for now lets get started. Bring your ideas to the next meeting and lets put on the best Turn off ever!

Next Meeting

Join us on Wednesday, March 3rd, at 7 P.M., when Jerry Decker will talk about open segment turning and kaliedoscopes. Location: Rich Johnson's Woodturning Center in San Jose.

Rich's Center is located behind his home at 14979 Joanne Ave., San Jose. From Hwy. 680, take the McKee Road exit East about 1.5 miles to Toyon Ave. Turn left and go 0.6 mile, turn right onto Joanne Ave.

Bring your chair and items for Show and Tell. We all learn together.

Rich

PRESIDENT'S CHALLENGE: WITH LID!

TURNING OUT

Show & Tell and President's Challenge

Show and Tell

New member John Lipka brought in a mulberry bowl, made from a stunted tree that produced an interesting coloration. He finished the piece with compressor sprayed lacquer over sanding sealer.

Rich Johnson displayed some Micronesian ivory nut mushrooms with tiny candle holders mounted in them.

Tom Donnelly brought a eucalyptus vase and an elm vase with ridges on the outside. Both were finished with Tung Oil. Unfortunately, we're missing pictures of Rich's and Tom's work.

Tony Bryhan showed a hollow end grain bowl of silkwood, turned with a Viking tool and a Stewart hollower. The pieces were finished with Tung Oil. Next, he showed a large silkwood piece turned from a crotch, pith included. He also showed an oak bowl.



President's Challenge: Glue Up

Lloyd Frisbee presented his first project, a small plate of yellowheart, padauk, zebra wood, and walnut. Nice work, Lloyd.

Mike Rude brought a segmented bowl of purpleheart, holly, and blood-



wood, made in ten segments and finished in lacquer.

Tom Donnelly brought a pittosporum urn decorated with polymer clay tiles made by his wife, glued in rings

around the outside to cover the glue line.



Clockwise from top left: John Lipka, Lloyd Frisbee, Tom Donnelly, Mike Rude.

Continued on page 4.

*Challenge,
con't. from
pg. 3.*

Mike Magrill pre-seted a small vase glued with Gorilla Glue with a glass tube inside to hold water. Poplar, walnut, white oak, bloodwood, lacewood, ash, and bocote went into the piece.

Herb Green showed off a pair of tops of maple burl and blackwood. Chatterwork adorned one, while the second sported purpleheart inlays.

Bob Tang showed a plate of mystery wood, perhaps



silky oak, inlaid with redwood burl and finished with danish oil.

Rich Johnson made a candle holder of ivory nut and eucalyptus.

John Lipka showed off an open, segmented bowl of padauk, black limba, and ash.

Phil Roybal displayed a set of napkin rings of maple and padauk, finished in Watco and wax.



Clockwise from top left: Mike Magrill, Rich Johnson, John Lipka, Phil Roybal, Bob Tang, and Herb Green.

*Work
holding,
con't. from
pg. 1*

setting. He has a Sorby eccentric chuck, with a screw that adjusts off center. It accepts a small faceplate. You can do interesting things with it, but, "It didn't pay for itself".

Moving on, Rich showed various faceplates. He uses them for hollowing, and for jigs such as a plywood disk covered in neoprene, which works with his vacuum chuck. He also has a faceplate mounted maple block with grooves to accommodate various pieces of PVC pipe, with neoprene gaskets, to hold bowls.

Rich next showed a McNaughten eccentric faceplate with moveable #25 weights to balance an unbalanced piece. He uses it with a faceplate mounted on a swash plate that can be tilted in various planes. This allows turning through an off center axis such as a tree crotch. He used this to make his Indian Wedding Vessels, turned on three axes.

Now for mechanical chucks. The first was an early Precision Chuck with lots of spigots and jaws. One accessory was a pin chuck, which was Rich's introduction to pin chucks. Next was a Nova scroll chuck.

Nova chucks have a variety of jaws, including step jaws. They offer a small chuck that fits 3/4" lathes.

Rich has a set of Cole jaws for his Nova, which grip a bowl by the rim to allow finishing the foot. He used long bolts in these jaws to drive the Wedding Vessel upside down when he finished the foot.

He next showed a Beale collet chuck. The collets hold dowels and small workpieces without marking them.

Rich showed an Escoulon chuck with



*Rich holds an eccentric
screw chuck.*

ball collets that can rotate to move the axis of a workpiece whose tenon is forced into the collet. He also has a threaded collet that will accept a faceplate. Jean Escoulon uses these chucks to produce his amazing eccentric turnings.

Rich finished the chuck story with his Vicmarc chucks, showing a variety of jaws including a small set that serves like a pin chuck. This is his work-horse chuck. He showed some nylon blanks from which you can make your own jaws.

Most of what Rich does starts with a pin chuck. He has them in various sizes for different projects. He had a friend make a body and an extension, then a series of pins that screw into the body for different size projects. Now, he's had some machined that fit into the jaws of a scroll chuck so no threading is needed. He cuts a hole in a natural edge blank with a Forstner bit, then mounts it on the pin chuck to turn it.

The evening was an eye opener for those of us who've struggled with mounting a strangely shaped blank on our lathes. Thanks, Rich.



*Above, two views of the
McNaughton eccentric
faceplate with accessory
swash plate and faceplate.
Below, Rich assembles Cole
jaws on his Vicmarc chuck.*





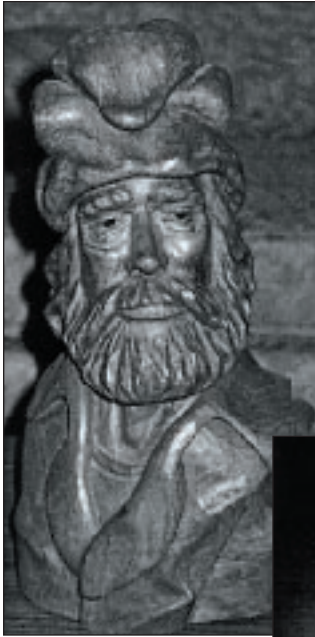
Wonder of Wood

Santa Clara Valley Carvers' & West Bay Woodturners'
37th annual

Wood Carving & Turning Show

Saturday, 4/17/04, 10 a.m.–5 p.m.

Sunday, 5/18/04, 10 a.m.–4 p.m.



Prospect High School Gym
18900 Prospect Rd.
(near Lawrence Expwy.)
Saratoga

Featuring club competition, raffles,
country store, whittling contest, silent
auction, and demonstrations.

Donation: \$2 Adults
\$1 Under 18
Free Under 10

STAFF REPORTS & OTHER BUSINESS

Rich Johnson (President)

We're kicking off a President's Challenge incentive program for members who complete all twelve Challenges in a year. Members have until the May meeting to make up January and February Challenges if need be. Members who complete all Challenges this year will receive special recognition (to be determined).

It's our turn to host the Turn Off this year, and it is scheduled for Sept. 18th. It will be a pot luck, with no turn-off this year. Instead, there will be a croquet match, and participating clubs must turn their croquet sets. Lloyd Frisbee will get the specifications and rules for croquet, and we will recruit members for event responsibilities starting next meeting.

Next H0me and Garden Show is Feb. 27-29 in San Mateo. Staff must wear SVW shirts or hats. (See Dick Pickering if you need one.)

Herb Green (VP/Programs)

John Decker will be our March presenter. John Jordan is scheduled for April 10th (Saturday), and Soren Berger is scheduled for June 19th (Saturday) Fee is \$25 for each. Send your check to Herb Green.

Phil Roybal (Sec'y./Editor)

We have 44 members signed up for 2004, with another 10 pending. Name badges for new members will be available in March. Contact Phil if you need one.

JIM GOTT (TREASURER)

INCOME

Raffle	\$48
Dues	\$300
Library	\$8
Excess H&G taxes	\$0.50

EXPENSES

Pickering demo fee	\$50
Challenge prizes	\$20
Fictitious name filing fee	\$52

NEW BALANCE (spendable) \$1522.92

Other Business

Mike Magrill reported on an All California Show of turnings and carvings to be held over 4 weeks in San Luis Obispo, starting in May, 2006. It will be a selling show, with entry fees in the \$10-\$25 range, and cash prizes for top entrants in various categories. More details will come in the next few months.

Fred Wray and John Lipka joined our membership rolls at the last meeting. Please make them welcome and introduce yourself.

FOR SALE

Even Roy wants to know... How did you do that?

Rich Johnson's Woodturners' Boot camp.
Learn the basics, from chainsaw to polish.
An all day class. Book available. Sign up
now. (408) 254-8485.



Woodfast lathe for sale

16" capacity, variable
speed, good condition.

Credit card OK. E-
mail Josh Salesin at jls-
epi@pacbell.net for more
info.

Affordable Elegance

Custom
Embroidery



Deborah
Bress

TEL: 408/243-6363

FAX: 408/244-0307

affordableelegance@netzero.net

SVW OFFICERS

President
Rich Johnson (408) 254-8485
latheart@pacbell.net

Vice-President
Herb Green (408) 268-5241
herbertjgreen@yahoo.com

Treasurer/Photographer
Jim Gott (408) 265-9501
jgtimp@aol.com

Secretary /Editor
Phil Roybal (408) 255-4789
proybal@pacbell.net

MENTOR PROGRAM

Our Mentor program now includes five vol-
unteer mentors. Contact Phil Roybal to join
the list. Members who need some help (but
not formal lessons) can contact:

Rich Dege	(408) 272-8122
Jim Gott	(408) 265-9501
Rich Johnson	(408) 254-8485
Ron Newcomb	(510) 797-6665
Phil Roybal	(408) 255-4789